

## **Sevenoaks District Community Safety Partnership**



### **Strategic Assessment 2015-16**

**Produced by: The Community Safety Team, Sevenoaks District Council**

## **Table of Contents**

---

<b>Introduction</b>	<b>3</b>
The aim of this Strategic Assessment	
The background of the Strategic Assessment	3
Who produced this Strategic Assessment	3
Methodology	4
<b>Part One – Sevenoaks District Contextual Information</b>	<b>5</b>
Population Profile	5
Ethnic Profile	6
Deprivation	6
Mosaic Profile of Residents	8
Unemployment	9
Out of Work Benefits	10
<b>Part Two – Overview of Crime in the District</b>	<b>12</b>
Anti-Social Behaviour	15
Burglary	15
Criminal Damage	15
Violent Crime	16
Metal Theft	16
Theft incl Shoplifting	16
Vehicle Crime	17
<b>Part Three – Community Safety Issues 2014-15</b>	<b>19</b>
Burglary Dwelling	21
Burglary other than Dwelling	22
Theft from a Motor Vehicle	26
Theft of a Motor Vehicle	27
Theft of a Pedal Cycle	28
Anti-Social Behaviour Incl Environmental Crime	31
Road Safety	37
Domestic Abuse	40
Theft and Handling Stolen Goods & Shoplifting	44
Substance Misuse	46
Youth Issues	51
<b>Part Four – Conclusion</b>	<b>55</b>
<b>Glossary</b>	<b>56</b>

## Introduction

---

### **The Aim of this Strategic Assessment**

This strategic assessment is produced for the Sevenoaks District Community Safety Partnership using data for the period December 2013 – November 2014 unless otherwise stated (for example crimes and ASB are April- November 2014). It identifies the priorities for the 2015-16 Sevenoaks District Community Safety Strategy & Action Plan.

The purpose of this strategic assessment is to provide information and understanding of community safety issues for the members of the Sevenoaks District Community Safety Partnership. It identifies the emerging priorities by considering the patterns, trends and shifts relating to crime, disorder and Anti-Social Behaviour in the Sevenoaks District. Additionally, it includes a performance assessment of how far the partnership has achieved its previous priorities and an update of issues considered by the local community to be priorities.

### **The Background of Strategic Assessments**

In 2006, a review of the partnership provisions of the Crime and Disorder Act 1998 and the Police Reform Act 2002 led to a series of recommendations to strengthen and extend existing requirements through the experience gained from partnership working. This resulted in a new set of national minimum standards which came into force in August 2007.

The 1998 Act included the requirement to produce a detailed crime and disorder audit through consultation with key agencies and the wider community and to use the findings to identify strategic priorities and take action to address them. The new national standards place an obligation on responsible authorities to comply with the specified requirements, one of which is the creation of an annual Strategic Assessment.

Strategic Assessments should identify current and anticipated crime, disorder and Anti-Social Behaviour issues from sound evidence and robust analysis. Strategic Assessments provide an intelligence-led business planning approach and help Partnerships to respond more effectively to the communities they serve.

### **Who Produced this Strategic Assessment?**

The Strategic Assessment has been produced on behalf of Sevenoaks District Community Safety Partnership by the District Council's Community Safety Team, in consultation with the Partnership's Executive Group using data and analysis supplied by the relevant agencies, through the Kent Partnership's Central Support Team. The structure of the Strategic Assessment is based on a template used throughout Kent.

## Methodology

Data collected for this Strategic Assessment relates to the time period December 2013 – November 2014 unless otherwise stated (for example crimes and ASB are April-November 2014) and yearly comparisons should be read to refer to the 12 month period.

The main body of this assessment is broken down into four sections.

**Part one** looks at contextual information such as Population, Diversity and Unemployment.

**Part two** gives a brief overview of Crime, Disorder and Anti-Social Behaviour issues affecting the Sevenoaks District. This includes an analysis of trends since the previous assessment, a cross-County comparison and ranking alongside other Districts in its Most Similar Group (MSG<sup>1</sup>), a group of local authority areas with characteristics similar to those of the Sevenoaks District.

**Part three** is the 'In-Depth Analysis', which will first look at the emerging partnership priorities with recommendations for the Sevenoaks District 2015-16 Strategy & Action Plan. It provides further analysis of the priorities looking at the scale of each issue, reasons for changes in levels and the suggested cause of the problem including the relevance of location, time, the offender or the victim.

The views and priorities of the local community have been gathered through the Kent Crime and Victimization Survey (KCVS) and the Partners and Communities Together (PACT) process.

A priority selection process is used, to produce a final list of recommended partnership priorities for the forthcoming year.

**Part four** looks at a broader range of issues including those that are important across the County, and those that have previously been priorities in the Sevenoaks District.

---

<sup>1</sup> MSG is Most Similar Groups. Most Similar Groups (MSGs) are groups of local areas that have been found to be the most similar to each other using statistical methods, based on demographic, economic and social characteristics which relate to crime.

## Part One - Sevenoaks District Contextual Information

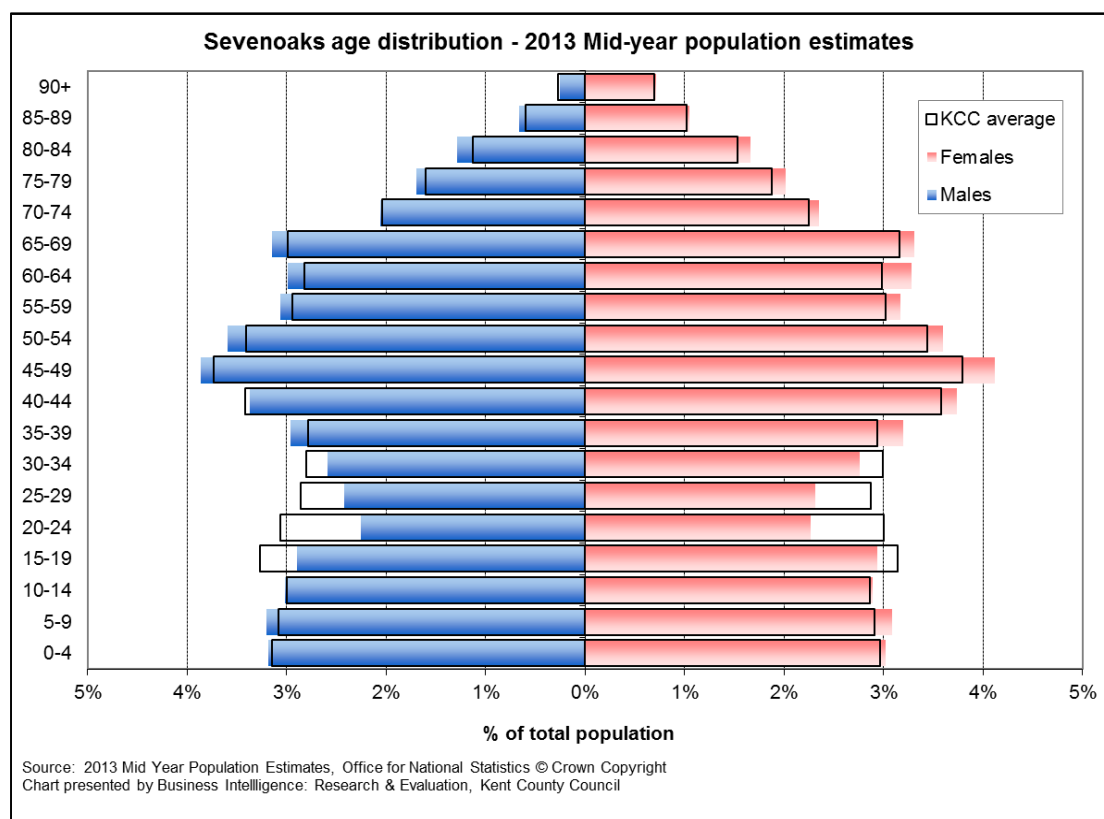
### Population profile

The latest population figures from the 2013 Mid-year population estimates show that there are 117,000 people living in Sevenoaks District<sup>2</sup>. This population size ranks Sevenoaks District the 7th most populated Kent local authority district area.

52% of Sevenoaks' population live in urban areas with the remaining 48% living in the surrounding rural area and settlements<sup>3</sup>. 22% of the district's total population live in the Sevenoaks area urban whilst 19% of the total population live in the Swanley urban area.

The age profile of Sevenoaks' population is shown in Chart 1. Overall Sevenoaks has a very similar age profile to the county average. Sevenoaks has a slightly higher proportion of people aged 35 and older, and a smaller proportion of teenagers and those aged 20-34 compared to the KCC average.

Chart 1 – Sevenoaks District Age Distribution



Over the last 10-years Sevenoaks' population has grown by 7.1% (an additional 7,800 people)<sup>4</sup>. This is the third lowest rate of growth of any Kent district. The population of the borough is forecast to remain the same over the coming years with current forecasts

<sup>2</sup> 2013 Mid-year population estimates, Office for National Statistics

<sup>3</sup> 2012 Ward level population estimates (experimental), Office for National Statistics

<sup>4</sup> Time series of Mid-year population estimates 1995 - 2013, Office for National Statistics

suggesting a 0% growth over the next 15-years<sup>5</sup>. This rate of growth is considerably lower than the county average (13%) and places Sevenoaks as the slowest growing Kent local authority district area. This forecast is based on KCC's assessment of the district authority's future housing targets as at September 2014. Such targets will be subject to changes as district authorities develop their Local development framework. Sevenoaks District Council have a Core Housing Strategy, that runs from 2006-2026.

### **Ethnic profile**

95.8% of Sevenoaks' population is of white ethnic origin with the remaining 4.2% being classified as of Black Minority Ethnic (BME) origin<sup>6</sup>. The proportion of Sevenoaks' population classified as BME is lower than the county average of 6.3%.

The largest ethnic group in Sevenoaks is White British, with 91% of residents from this ethnic origin. Within the BME population, the largest ethnic groups are Indian and White and Asian mixed (each accounting for 0.6% of all residents).

### **Deprivation**

The Indices of Deprivation 2010 provide a measure of deprivation at both district and sub-district (Lower Super Output Area) level, relative to other areas in England<sup>7</sup>.

Table 1 presents the national and county rank of Sevenoaks based on the 2010 Index and also shows how the rankings have changed since the 2007 Index<sup>8</sup>.

In 2010 Sevenoaks District was ranked as the least deprived district in Kent (ranked 12 out of 12 districts, with the most deprived being ranked 1). Nationally, Sevenoaks ranks 276<sup>th</sup> out of 326 local authority districts in England. This rank places it within England's least deprived half of authorities.

The county rank of Sevenoaks has remained the same between 2007 and 2010. On the national ranking, Sevenoaks has moved down by 6 positions from 270<sup>th</sup> in 2007 to 276<sup>th</sup> in 2010. This indicates the Sevenoaks' level of deprivation has increased, relative to other areas in England.

---

<sup>5</sup> KCC Strategy forecasts (Oct'2014). Research & Intelligence, Kent County Council

<sup>6</sup> 2011 Census, Office for National Statistics

<sup>7</sup> Indices of Deprivation 2010, Department for Communities and Local Government

<sup>8</sup> Based on the indicator 'national rank of average score'

**Table 1: National and county rank of Kent districts based on the 2007 and 2010 Indices of Deprivation (table displayed based on 2010 rank)**

LA CODE	District	2007 Index		2010 Index		Change in rank*	
		National rank (out of 326)	KCC rank (out of 12)	National rank (out of 326)	KCC rank (out of 12)	National position	KCC position
29UN	Thanet	60	1	49	1	11	0
29UL	Shepway	114	3	97	2	17	1
29UM	Swale	108	2	99	3	9	-1
29UE	Dover	142	5	127	4	15	1
29UG	Gravesham	132	4	142	5	-10	-1
29UC	Canterbury	180	7	166	6	14	1
29UD	Dartford	170	6	175	7	-5	-1
29UB	Ashford	206	8	198	8	8	0
29UH	Maidstone	225	9	217	9	8	0
29UQ	Tunbridge Wells	250	10	249	10	1	0
29UP	Tonbridge & Malling	256	11	268	11	-12	0
29UK	Sevenoaks	270	12	276	12	-6	0

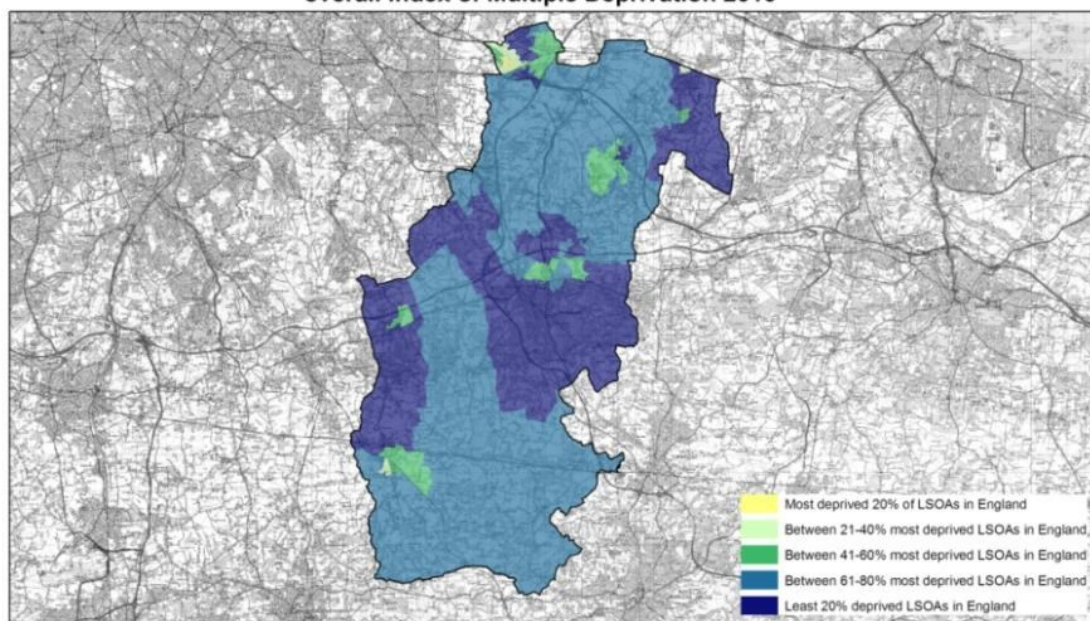
\* A minus change in rank illustrates that a district has moved down the rankings and is therefore now less deprived relative to other LAs in England  
Source: Indices of Deprivation, Communities and Local Government

The levels of deprivation vary across the district. Whilst there are no areas in Sevenoaks which are within England’s top 20% deprived, there are areas that are within England’s top 20-40% deprived and in contrast there are other parts within England’s least 20% deprived of areas. More detail is shown on Map 1.

The greatest levels of deprivation are found within the Swanley area. Neighbouring some of the most deprived areas of Sevenoaks are areas with relatively low levels of deprivation. The least deprived areas of Sevenoaks are found in the ward of Dunton Green and Riverhead.

**Map 1**

**Deprivation Rank of areas within Sevenoaks based on the overall Index of Multiple Deprivation 2010**



Source: Index of Multiple Deprivation 2010, Communities and Local Government (CLG)  
Produced by Research & Evaluation, Kent County Council

© Crown Copyright and database right 2011. Ordnance Survey 100019238



## Mosaic profile of residents

Mosaic Public Sector is a classification system designed by Experian to profile the characteristics of the UK population. This profiling is done by Kent County Council

Each household in the UK is classified as belonging to one of 13 groups and 69 types. This process has been taken further in Kent where county specific data has been included in Experian's model to re-segment these 69 UK types into 13 groups relevant only to Kent. The 13 Kent specific groups have been named Kent and Medway A to M.

These groups identify clusters of individuals and households that are as similar as possible to each other, and as different as possible to any other group. They describe the residents of a postcode in terms of their typical demographics, their behaviours, their lifestyle characteristics and their attitudes. The characteristics of the K&M groups are presented in Table 2

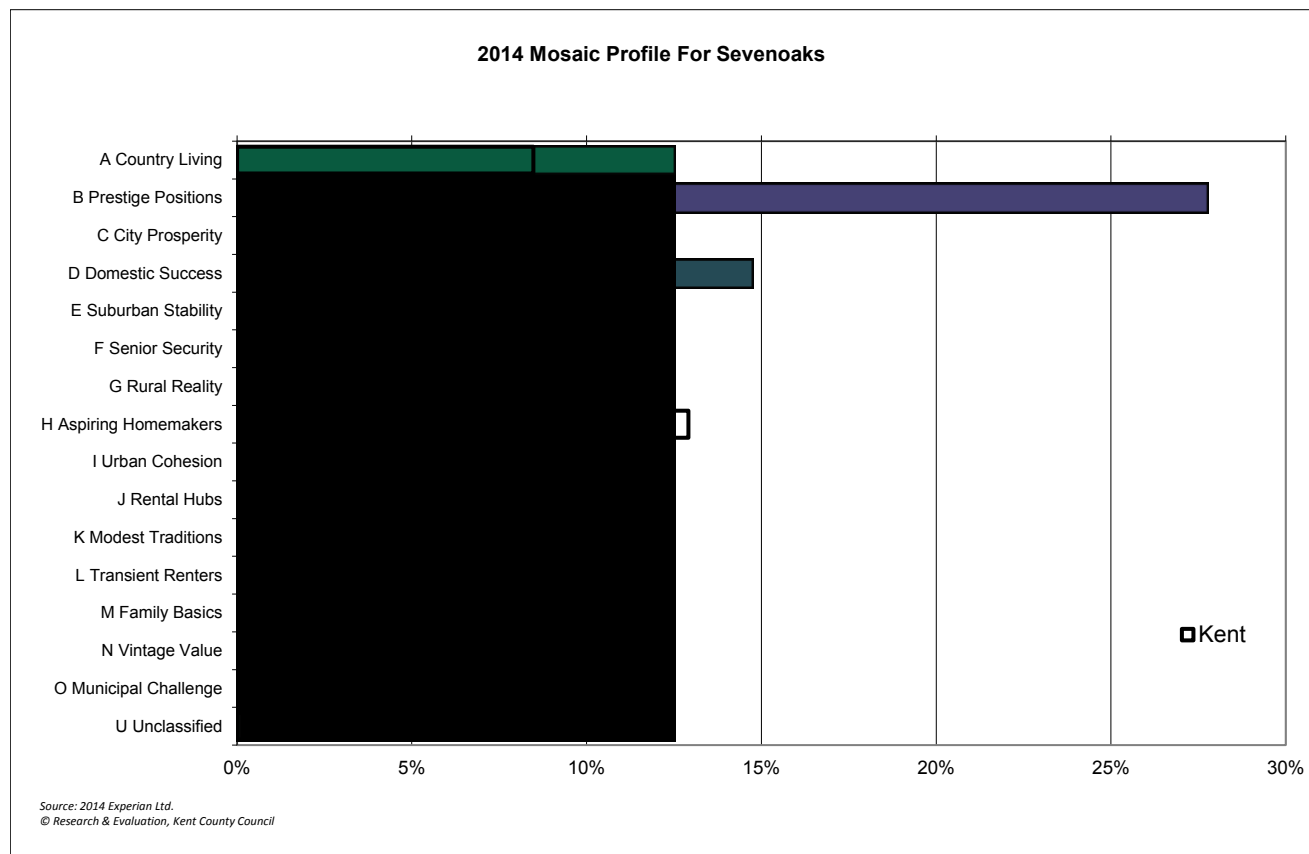
**Table 2**

Definition	
<b>A</b>	- Country Living - Well off owners in rural locations enjoying the benefits of Country life
<b>B</b>	- Prestige Positions - Established families in large detached homes Living upmarket lifestyles
<b>C</b>	- City Prosperity - High status city dwellers living in central locations and persuing careers with high rewards
<b>D</b>	- Domestic Success - Thriving families who are busy bringing up children and following careers
<b>E</b>	- Suburban Stability - Mature suburban owners living in settled lives in mid-range housing
<b>F</b>	- Senior Security - Elderly people with assets who are enjoying a comfortable retirement
<b>G</b>	- Rural Reality - Householders living in expensive homes in village communities
<b>H</b>	- Aspiring Homemakers - Younger households settling down in housing priced within their means
<b>I</b>	- Urban Cohesion - Residents of settled urban communities with a strong sense of identity
<b>J</b>	- Rental Hubs - Educated young people privately renting in urban neighbourhoods
<b>K</b>	- Modest Traditions - Mature homeowners of value homes enjoying stable lifestyles
<b>L</b>	- Transient Renters - Single people privately renting low cost homes for the short term
<b>M</b>	- Family Basics - Families with limited resources who have to budget to make ends meet
<b>N</b>	- Vintage Value – Elderly people reliant on support to meet financial or practical needs
<b>O</b>	- Municipal Challenge – Urban renters of social housing facing an array of challenges

The Mosaic profile of residents in Sevenoaks is shown in Chart 2 alongside the county profile.



Chart 2 – 2014 KCC Mosaic Profile for Sevenoaks District



## Unemployment

Sevenoaks' unemployment rate is currently 0.9%. This is considerably lower than the county average of 1.8% and the national average of 2.2%<sup>9</sup>.

In September 2014 there were 658 unemployed people in Sevenoaks which is 6.9% lower (49 fewer unemployed people) than August 2014 and 27.9% lower (254 fewer unemployed people) than September 2013.

Unemployment rates vary across the district. The lowest unemployment is in Brasted, Chevening and Sundridge ward where 0.3% of the working age population are unemployed. The highest rate is in Swanley St Mary's ward where 2.6% of the working age population are unemployed.

**Table 3: Unemployment rates**

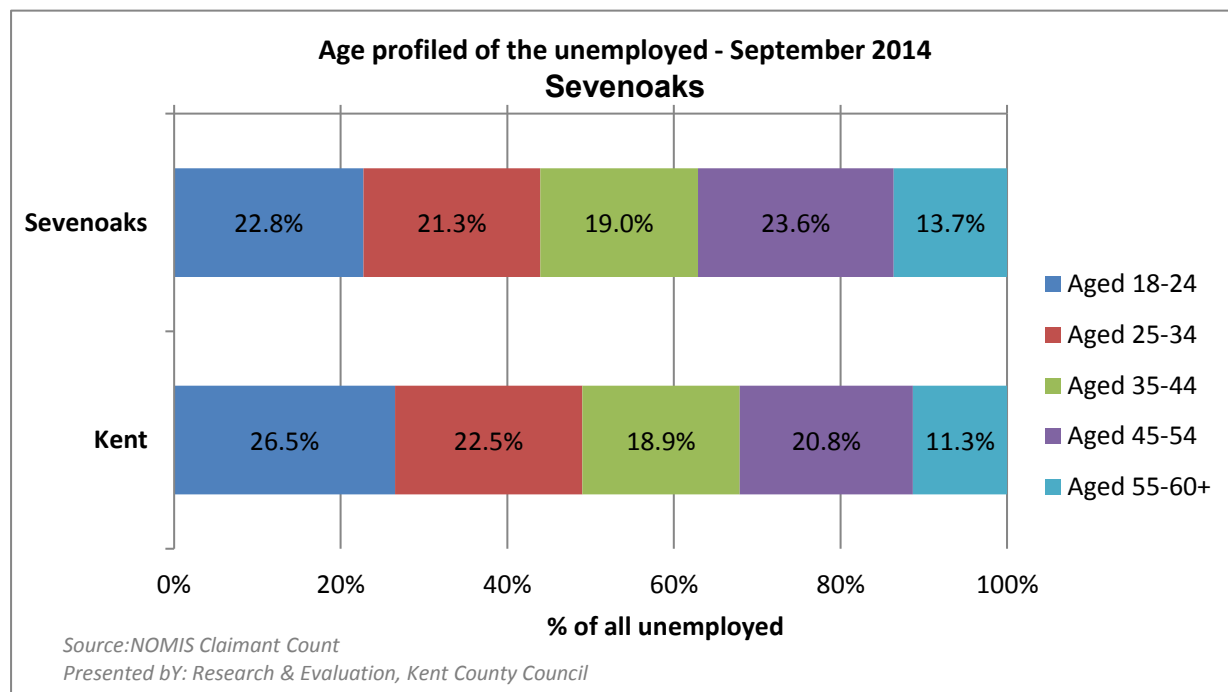
District	Total unemployed as at September 2014	Resident based rate %	Change since previous month		Change since last year	
			Number	%	Number	%
Sevenoaks	658	0.9%	-49	-6.9%	-254	-27.9%
Kent	16,162	1.8%	-622	-3.7%	-7,165	-30.7%
Great Britain	870,863	2.2%	-37,028	-4.1%	-391,876	-31.0%

Source: NOMIS - Claimant Count

<sup>9</sup> Unemployment rates as at September 2014, Office for National Statistics

The majority of those unemployed are aged 45-54. In Sevenoaks, 45-54 year olds account for 23.6% of all of those unemployed. More information is provided in Chart 3.

**Chart 3: Age profile of the unemployed**



### Out of Work Benefits

Out of work benefits claimants includes those people aged 16-64 who are claiming a key Department of Work and Pension (DWP) benefit because they are not working. This definition is used as an indicator of worklessness.

As at February 2014, there were 4,010 people in Sevenoaks who were claiming out of work benefits. This is 5.7% of all 16 to 64 year olds and is lower than the county average of 9.2%.

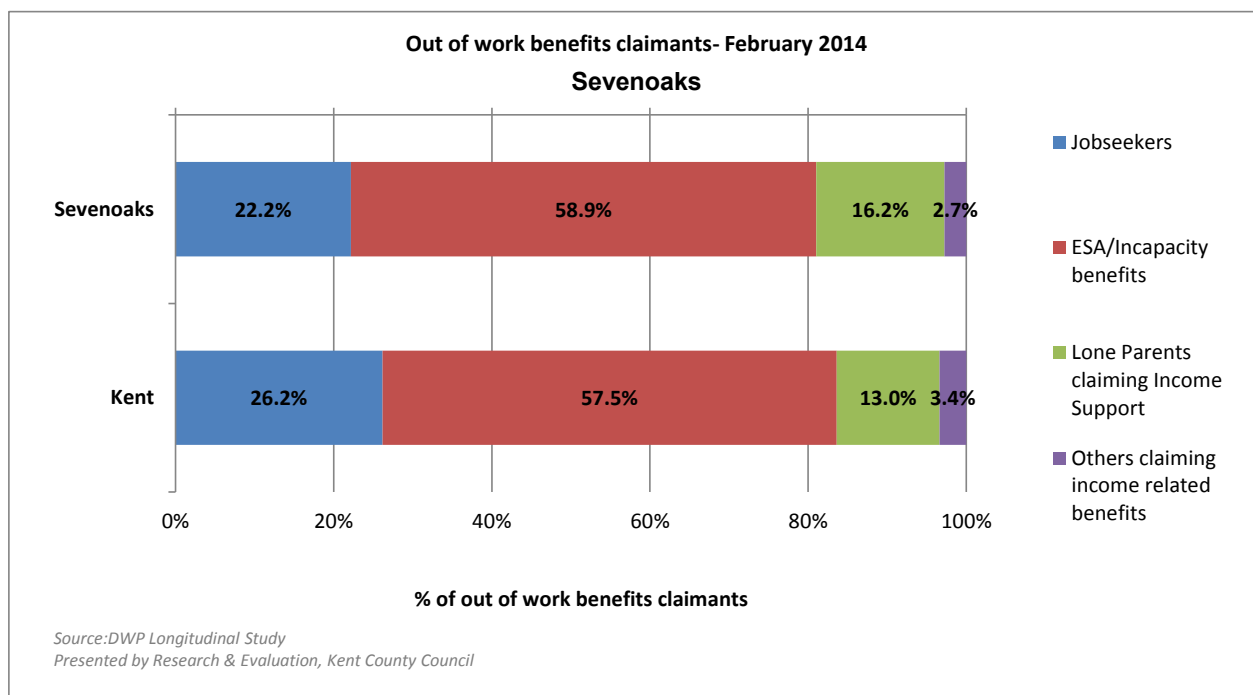
The largest proportion of those who are out of work are claiming Employment Support Allowance or Incapacity Benefit i.e. they have a health condition which is restricting the sort of work that they usually do.

A lower proportion is classified as jobseekers (claimants of Jobseekers Allowance) than the average for the KCC area. 16.2% of those who are workless in Sevenoaks are lone parents who are claiming Income Support. This is higher than the KCC rate of 13.0%<sup>10</sup>.

Chart 4 shows out of work benefits claimants by main reason for which they are claiming.

<sup>10</sup> DWP Longitudinal Study: February 2014

**Chart 4: Out of work benefit claimants in Sevenoaks District**



As with Unemployment rates, out of work benefit claimant rates also vary across the District. The lowest proportion of out of work benefit claimants is in Sevenoaks Kippington ward where 2.8% of the working age population are claiming. The highest rate is in Swanley St. Mary’s ward where 15.8% of the working age population are claiming.

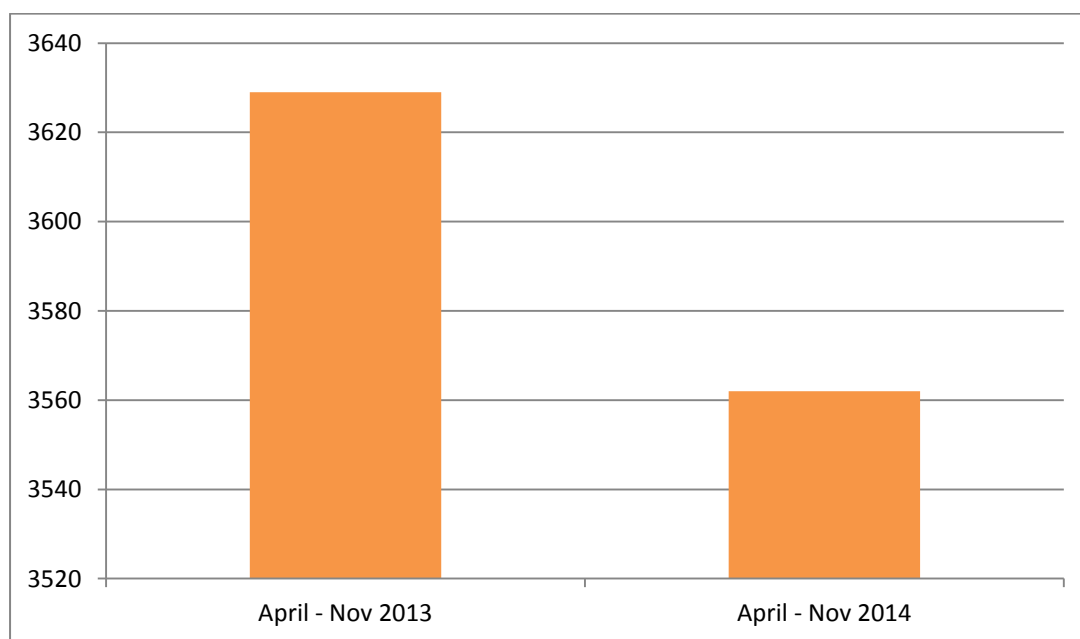
## Part Two – Overview of crime in the District

---

Pages 12 to 18 look at community safety issues to identify trends and comparative performance. This will help the Community Safety Partnership (CSP) to determine its priorities going forward.

This year's recorded crime figures (April 2014 – November 2014) show that overall crime<sup>11</sup> within the Sevenoaks District has decreased from 3629 to 3562 in the same period last year. This is a **total crime decrease of 1.84%**, with 67 fewer offences occurring in the same eight month period. Sevenoaks District has the 3<sup>rd</sup> lowest number of recorded crimes in the County. Conversely, the Sevenoaks District has the 12<sup>th</sup> highest crime rate out of 15 MSG. Adult re-offending figures (for the period January 2013 to December 2013) for the Sevenoaks District are the second lowest in the County, with 7.43% re-offending during this period. The below chart shows crime comparison on a monthly basis compared to the same period previous year.

**Chart 5: Victim based crime April – Nov 2014 compared to same period previous year**

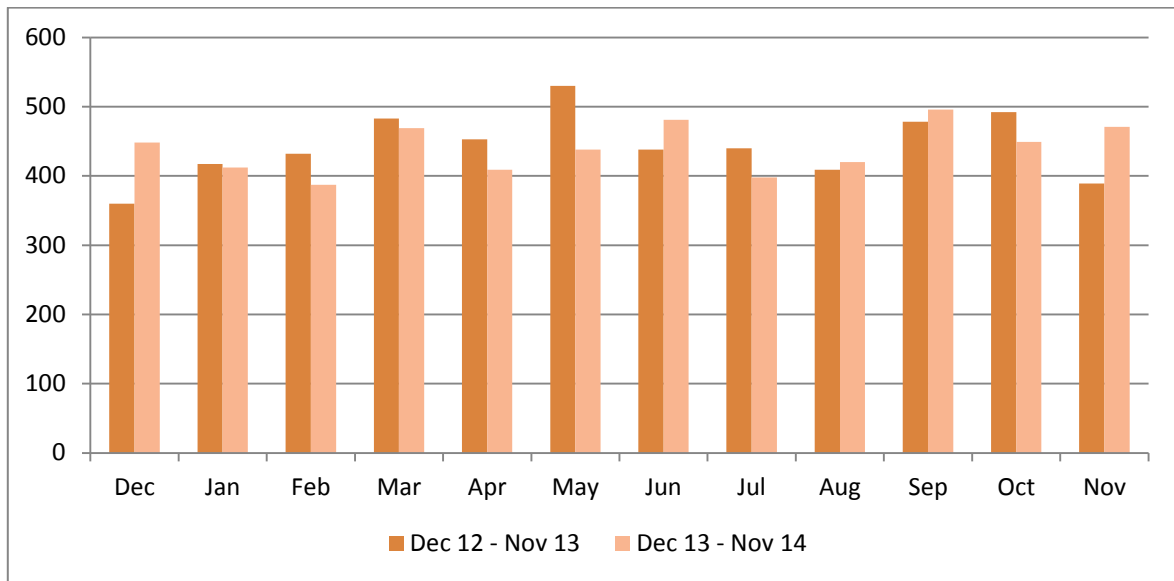


Total Victim Based crime 2014 v 2013 in the Sevenoaks District (Source: Kent Police)

---

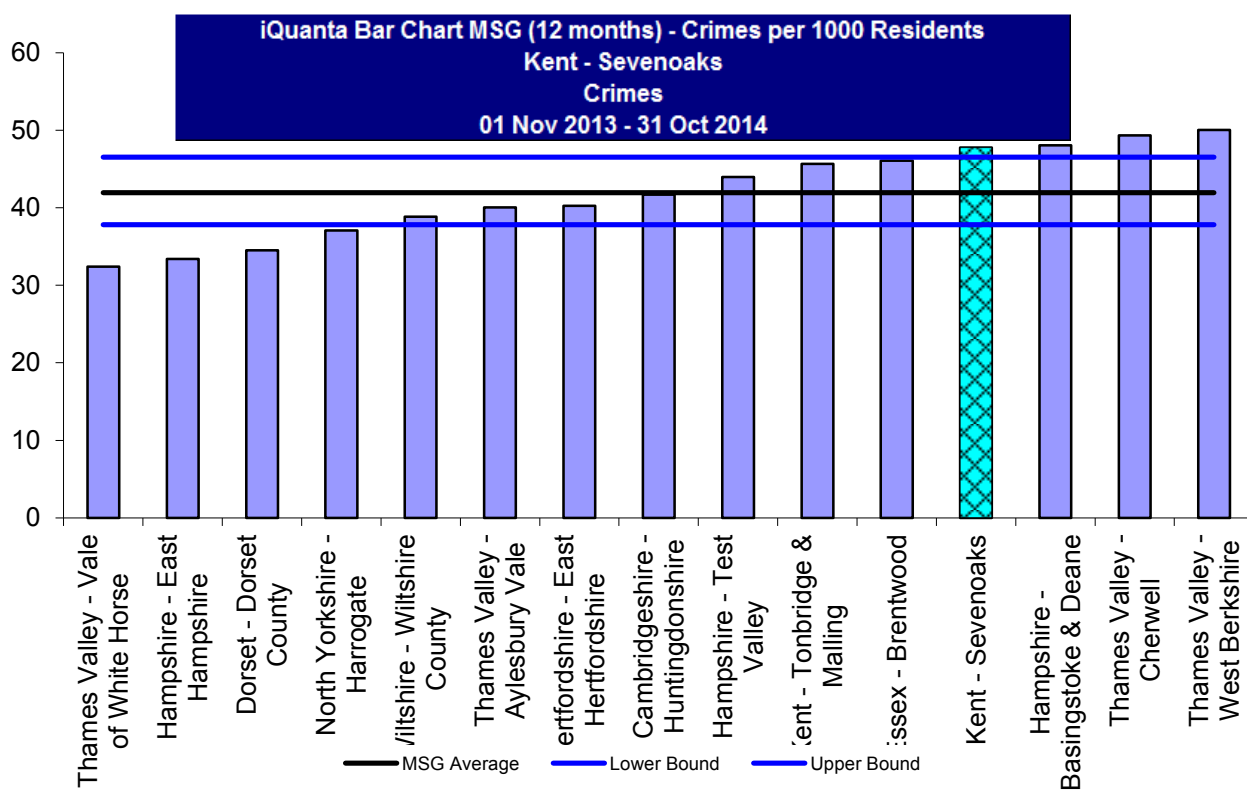
<sup>11</sup> As of April 2013, Kent Police recorded crime figures refer to victim-based crimes and no longer include the categories 'drug offences', 'fraud & forgery' and 'other offences'. Subsequently, historic and County comparisons regarding total crime have also excluded these categories.

Chart 6: Victim based crime Dec 2012 – Nov 2014 month by month comparison



Total Victim Based crime month by month in the Sevenoaks District (Source: Kent Police)

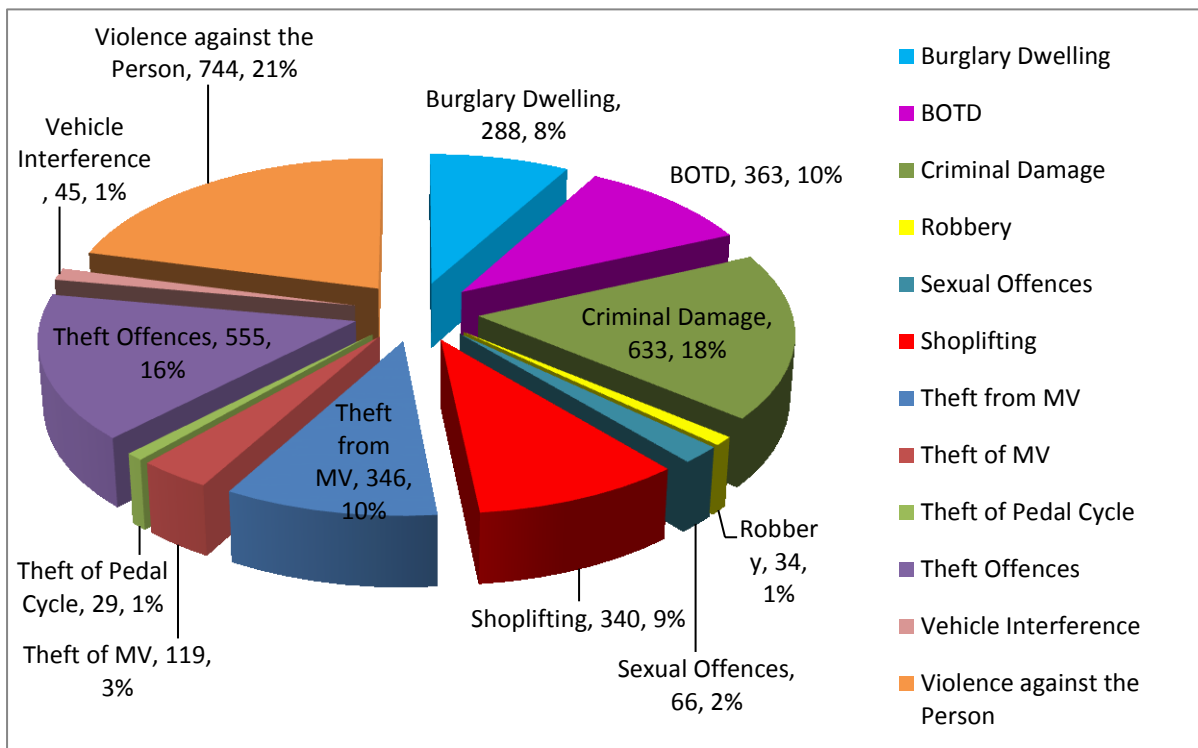
Chart 6: crime in Sevenoaks District Nov 13- Oct 2014 IQuanta Data



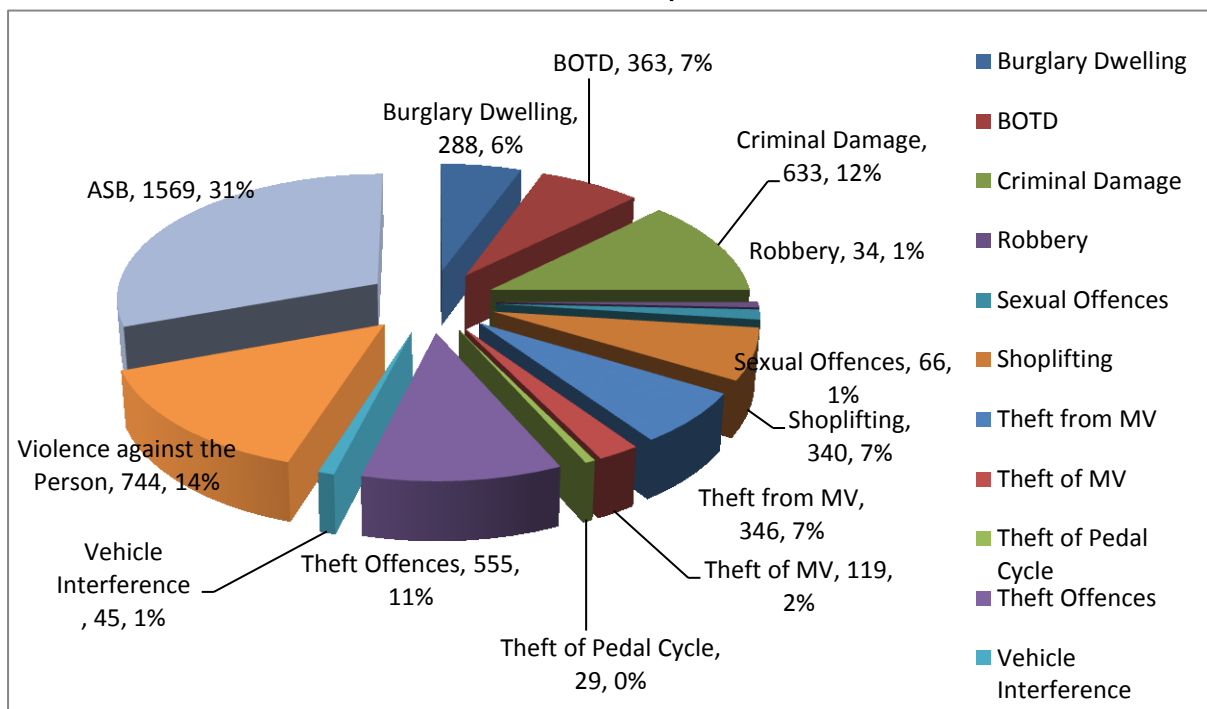
CSP	Crimes / 1000 Pop
Thames Valley - Vale of White Horse	32.407
Hampshire - East Hampshire	33.411
Dorset - Dorset County	34.500
North Yorkshire - Harrogate	37.087
Wiltshire - Wiltshire County	38.838
Thames Valley - Aylesbury Vale	40.040
Hertfordshire - East Hertfordshire	40.241
Cambridgeshire - Huntingdonshire	41.713
Hampshire - Test Valley	43.980
Kent - Tonbridge & Malling	45.674
Essex - Brentwood	46.065
<b>Kent - Sevenoaks</b>	<b>47.781</b>
Hampshire - Basingstoke & Deane	48.036
Thames Valley - Cherwell	49.339
Thames Valley - West Berkshire	50.041
<b>MSG Average</b>	<b>41.943</b>

Kent Police figures released for this financial year to date (April 2014 to November 2014) have been used to generate the following pie charts which show a breakdown of crime in the Sevenoaks District including and excluding the figures for Anti-Social Behaviour (ASB).

**Chart 7: total crime in Sevenoaks CSP April 2014-Nov 2014**



**Chart 8: total crime and ASB in Sevenoaks CSP April 2014-Nov 2014**



Specific crime types have been examined alongside the rates for last year, crime levels throughout the County and MSG (wherever possible) to provide a greater understanding of crime and ASB in the Sevenoaks District. These are set out below.

### **Anti-Social Behaviour (ASB)**

ASB accounts for the largest recorded issue when compared to individual crime types in the District and makes up 31% of the total recorded figures when included in crime statistics. Figures show 1,569 recorded incidents of ASB occurring within the District and reported to Kent Police this period (April 2014-Nov 2014); this is the 2<sup>nd</sup> lowest number of ASB reports in Kent. saw a slight increase of 1% (8 offences).

During the period there has been a 18.8% increase in the number of reports to the District's Anti-Social Behaviour Officer. The total number of calls received totals 170 (27 more calls than last year Oct 2013 – Sept 2014).

ASB is most prominent community safety issue in the Sevenoaks District, (including environmental issues) and will continue to be a priority for the CSP.

### **Burglary**

This period has seen a total of 651 burglary offences - a decrease of 17% (133 offences) compared with figures for same period last year. Burglary is divided into burglary dwelling and burglary other than dwelling (BOTD). Although individually these offences account for a relatively small percentage of total crime in the District (8% and 10% respectively), they are highest in our MSG despite the reduction in crimes. The Sevenoaks District ranks very poorly in County comparisons as 3<sup>rd</sup> highest for dwelling offences and 4<sup>th</sup> highest for BOTD. The District has the highest number of burglary offences in its MSG.

Burglary Dwelling and BOTD will remain a priority for the Community Safety Partnership.

### **Criminal Damage**

Criminal damage is the second biggest recorded crime type in the District and makes up 18% of total crimes. Criminal damage has decreased by 3.1% (20 offences) April 2014 – November 2014 compared with the same period last year. This year's decrease brings the total recorded incidents of criminal damage in the Sevenoaks District to 633. This is the 3<sup>rd</sup> lowest number of criminal damage in Kent. Conversely, the Sevenoaks District is the second highest within the MSG.

### **Violent Crime**

Violent crime refers to robbery, sexual offences and violence against the person (including domestic abuse) and accounts for 24% of total crime. Violent crime has risen by 28% (187 offences) this period with a total of 844 violent crimes recorded. The District has the lowest rate in Kent and ranks 4<sup>th</sup> lowest out of 15 other Districts in its MSG.



Robbery has increased by 112% (18 offences) this period, with 34 crimes being recorded April 2014-Nov 2014. The District ranks 4<sup>th</sup> highest in MSG (Dec 2013 – Nov 2014), with rates of robbery slightly above average, however at a County level, the rate is significantly below average and the 4<sup>th</sup> lowest Kent.

The number of sexual offences in Sevenoaks District has always been the lowest in Kent. This year (April – November 2014) has recorded 66 sexual offences (3 less than same period last year) and the Sevenoaks District has the 5<sup>th</sup> lowest rate of sexual offences in the MSG.

Violence against the person is up 30.1%, with 744 recorded crimes this period. Despite the rise, the District has the lowest rate in Kent, but is above average for the MSG with Sevenoaks District ranking 4<sup>th</sup> highest. Violence against the person accounts for 85% of total violent crime (April 2014 to November 2014), and the majority of these offences are incidents of domestic abuse. Domestic abuse in the Sevenoaks District has risen by 18.4% which similar to the County average increase of 11.9% (April 2014 – November 2014). The District has the lowest number of Domestic Abuse incidents (771)<sup>12</sup>, and repeat victims (186), in Kent over this period.

Domestic Abuse historically is thought to have been considerably under reported. An increase in reporting is therefore to be welcomed and does not necessarily represent an increase in the actual number of incidents.

Domestic abuse will continue to be a priority for the Community Safety Partnership.

### **Metal Theft**

Sevenoaks District had 36 Metal Thefts April 2014-November 2014. The District has achieved a crime reduction of 50.74% (37 offences) compared with the same period last year when there were 73 reported offences. The Sevenoaks District has the 6<sup>th</sup> lowest figures in Kent.

The CSP has been targeting this through its current Strategy and Action Plan. The only scrap merchant in the District was regularly visited and many cross border initiatives have taken place, especially with the Metropolitan Police.

### **Theft including Shoplifting**

Levels of theft and handling of stolen goods have seen a slight increase of 1.4% (13 offences) over this period and the total number of theft and handling crimes for the District stands at 924. Comparisons show the Sevenoaks District has the joint lowest rate in the County and the 4<sup>th</sup> lowest rate in MSG.

---

<sup>12</sup> Apparent inconsistency in annual figures arises from the classification of 'incident'. Domestic abuse 'incidents' are not necessarily violent and can refer to verbal disputes which have been reported to Kent Police; as such, not all incidents make it into statistics for violence against the person .

Shoplifting has seen an increase of 26.9% (72 offences) on figures this period, with 340 shoplifting offences recorded. The Sevenoaks District has the 2<sup>nd</sup> lowest shoplifting offences in Kent.

Since April 2013, 'Theft Offences' have been reclassified as 'Other Thefts' and previous Kent Police data has been recounted to allow for comparisons to be made. Sevenoaks District has seen a crime reduction of 9.9% (61 offences) April 2014-November 2014, and the Sevenoaks District ranks 2<sup>nd</sup> lowest in the County.

### **Vehicle Crime**

Vehicle crime has reduced by 19.9% (April 2014 – November 2014), with the District recording 465 reported crimes, but still ranking high, 5<sup>th</sup> highest in the County and 2<sup>nd</sup> highest of MSG.

Kent Police categorise vehicle crime as Theft From a Motor Vehicle (TFMV) and Theft of a Motor Vehicle (TOMV). The figure for TFMV stands at 346 this period, this is a reduction of 23.9% (109 offences) on same period last year and the District is the 4<sup>th</sup> worst performing area in Kent, 2<sup>nd</sup> worst in MSG. Despite a slight reduction of 5.5% (7 offences) bringing the total number of TOMV to 119 this period, the District still ranks very poorly and comes 5<sup>th</sup> highest in the County and 2<sup>nd</sup> highest MSG.

Vehicle crime remains a priority for the Community Safety Partnership.

Pedal Cycle Thefts do not reflect the above trend with only 29 offences being recorded this period. Sevenoaks District ranks 1<sup>st</sup> lowest in Kent and lowest in MSG.

A summary of crime data for the Sevenoaks District is given in Table 4.

**Table 4 - Sevenoaks District Crime Figures April – November 2014 (Kent Police)**

Category	April 2013 – Nov 2013	April 2014 – Nov 2014	Difference	Percentage	Per 1K population	County Position	MSG Position
All Victim-Based Crime*	3629	3562	-67	-1.9%	30.6	3	12
Anti-Social Behaviour	1561	1569	8	0.5%	13.5	2	
Burglary Dwelling	291	288	-3	-1.0%	2.5	10	12
Burglary Other	473	363	-110	-23.3%	3.1	9	11
Criminal Damage	653	633	-20	-3.06%	5.4	2	14
Domestic Abuse - No. of incidents	651	771	120	18.4%	6.6	1	
Domestic Abuse - No. of repeat victims	165	186	21	12.7%	1.6	1	
Domestic Abuse - % of repeat victims	25.3%	24.1%	-1.2%	-4.74%		3	
Drug Offences – Police Data	136	15	-121	-88.9%	0.1	1	
Drug Offences – Iquanta Data	199	109	-90	-45.2%	0.9		1
Metal Theft	73	36	-37	-50.7%	0.3	5	
Robbery	16	34	18	112.5%	0.3	5	12
Sexual Offences	69	66	-3	-4.3%	0.6	1	5
Shoplifting	268	340	72	26.9%	2.9	2	
Theft and Handling Exc VI	911	924	13	1.42%	7.9	1	4
Theft From a Motor Vehicle	455	346	-109	-23.9%	3.0	9	13
Theft of a Motor Vehicle	126	119	-7	-5.5%	1.0	8	14
Theft of a Pedal Cycle	27	29	2	7.4%	0.2	1	1

## Part 3 - Community Safety Issues 2015-16

---

**3.1** In addition to looking at crime trends, the Partnership has considered wider community safety issues. These include County priorities, The Police Crime Commissioners Plan and those issues known to be important to people in the Sevenoaks District.

**3.2** The Partnership has identified its priorities based on a grading system using the following criteria:

- Community Concern
- Level of Harm / Impact on the Community
- Volume
- Trend Over Time
- Performance compared to Districts/County/Most Similar Group
- Whether the Partnership can be effective in addressing the issue

Each of these criteria has been scored using a scoring system based on these values: **0** (No evidence/impact), **1** (low impact/problem), **3** (Slight impact/problem), **5** (serious impact problem).

Table 5 below shows the outcomes of the scanning process as described above. The Partnership has prioritised the top 8 of these issues for further analysis and action during 2015/16.

**Table 5 - Sevenoaks District Community Partnership Ranking**

Community Safety Issue	Community Concern	Trend Increase	Volume	Level of Harm	Poor Performance comparison	Partnership Contribution	Total
Domestic Abuse*	3	5	5	5	3	5	26
Burglary	5	3	3	5	5	3	24
Anti-Social Behaviour*	5	3	3	5	3	5	24
Substance Misuse	5	3	3	5	1	5	22
Vehicle Crime	3	3	3	5	5	3	22
Road Safety	5	3	1	3	5	5	22
Shoplifting	3	5	5	3	1	3	20
Youth Issues	5	1	1	5	0	5	17
Criminal Damage	5	1	3	1	3	3	16
Repeat Offenders	3	3	3	3	0	3	15
Vulnerable Adults	3	1	1	3	1	5	14
Fires	1	1	3	3	-	3	11

\* County Community Safety Agreement priorities

The following sections of this Strategic Assessment provide a detailed analysis and summary of each of the identified existing and emerging priorities across Sevenoaks District.

## Burglary

Kent Police data shows that burglary offences in the Sevenoaks District have decreased by 17% (133 offences) compared with figures for same period last year (April – November 2013). The District ranks very poorly in County comparisons being the 3<sup>rd</sup> highest for Burglary Dwelling offences and 4<sup>th</sup> highest for Burglary other than Dwelling. The District has the highest rate of burglary offences in its MSG.

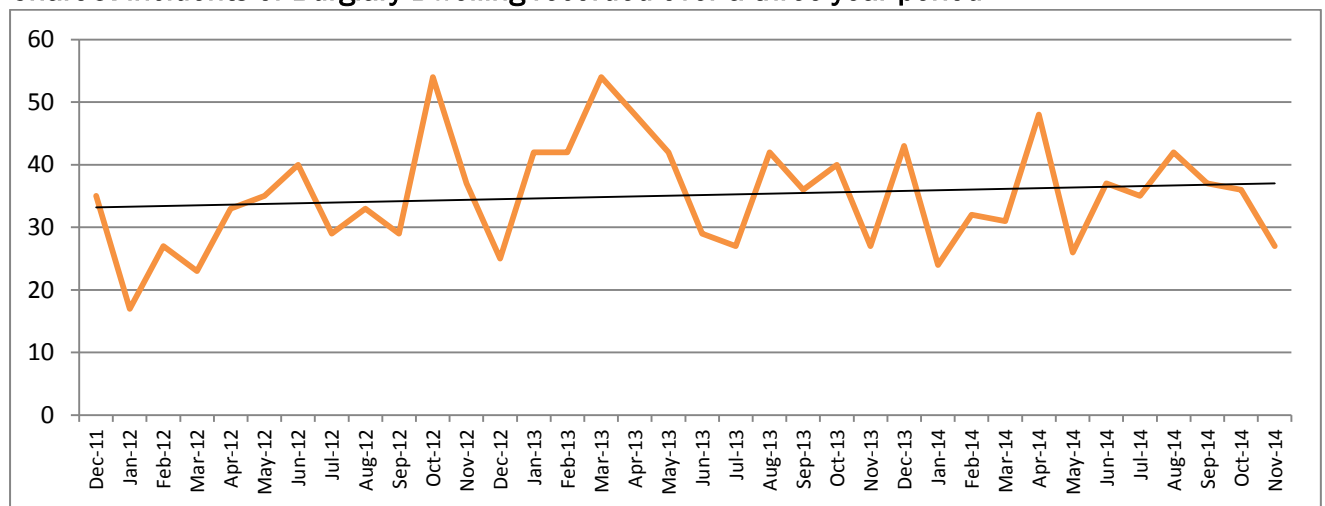
The following wards experienced the most incidents of burglary with each area reporting over 40 burglary offences (April 2014 to November 2014):

- Ash
- Brasted, Chevening and Sundridge
- Halstead, Knockholt and Badgers Mount
- Hartley and Hodsoil Street
- Otford and Shoreham
- Seal and Weald

### Burglary Dwelling

Burglary Dwelling makes up 8 % of the total recorded crime in the Sevenoaks District. Burglary Dwelling has seen a reduction of 0.5%, compared with the same period last year, with the number of offences falling from 291 to 288. Comparative performance is poor the County picture is not dissimilar, with 5 other districts reporting a decrease in dwelling offences over the same time period. Sevenoaks District ranks 3<sup>rd</sup> highest in the County and highest in MSG.

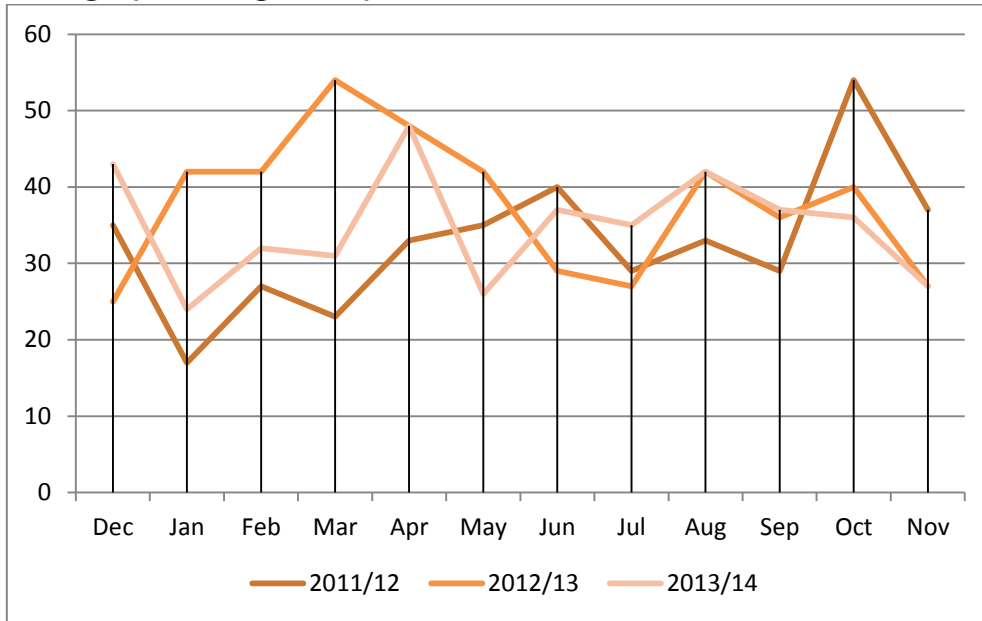
**Chart 9: incidents of Burglary Dwelling recorded over a three year period**



**Burglary Dwelling in the Sevenoaks District (Source: Kent Police)**

The three year trend line shows that while there has been an increase over that period Burglary Dwelling the trend line shows a steady line although crime has fluctuated in certain time periods.

**Chart 10: Burglary Dwelling: three year breakdown across Sevenoaks District**



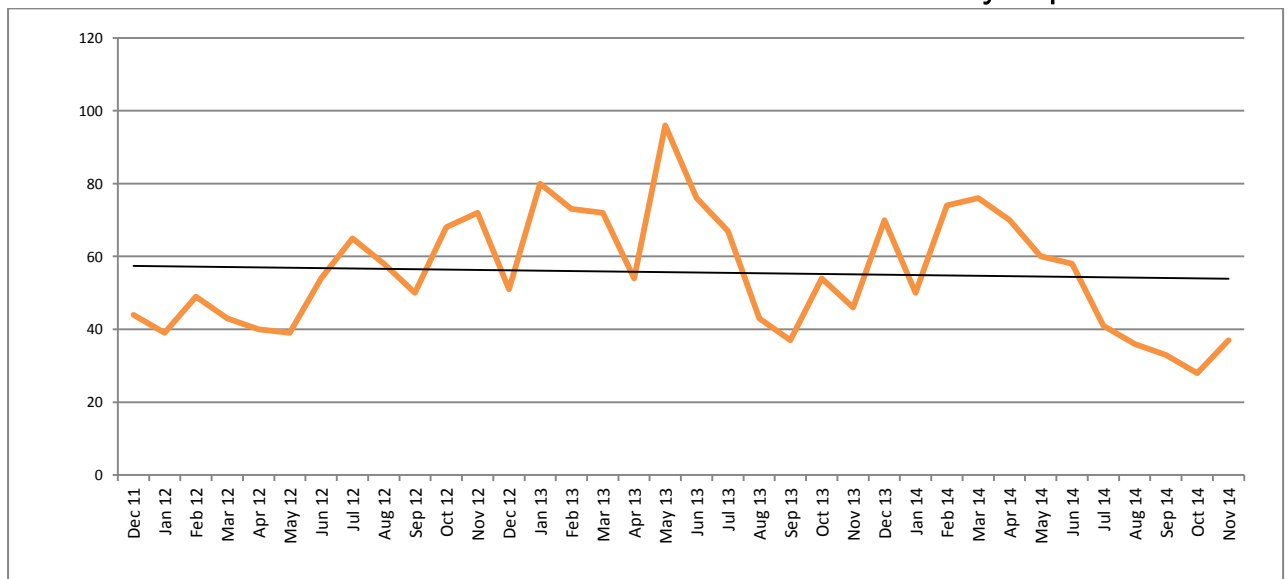
A closer look at trends in Burglary Dwelling in the Sevenoaks District (Source: Kent Police)

When taking an in-depth look at monthly figures for the period of analysis it is noted that there was an initial improvement before a peak in August. A downward trend means that in November 2014 was lower than the previous year.

**Burglary other than Dwelling**

BOTD make up 10% of total crime in the District (based on recorded figures for April to November 2014). The Sevenoaks District now has the 4<sup>th</sup> highest recorded crime rate for BOTD in the County and highest in the MSG. However charts 10 and 11 show an improvement over a three year period.

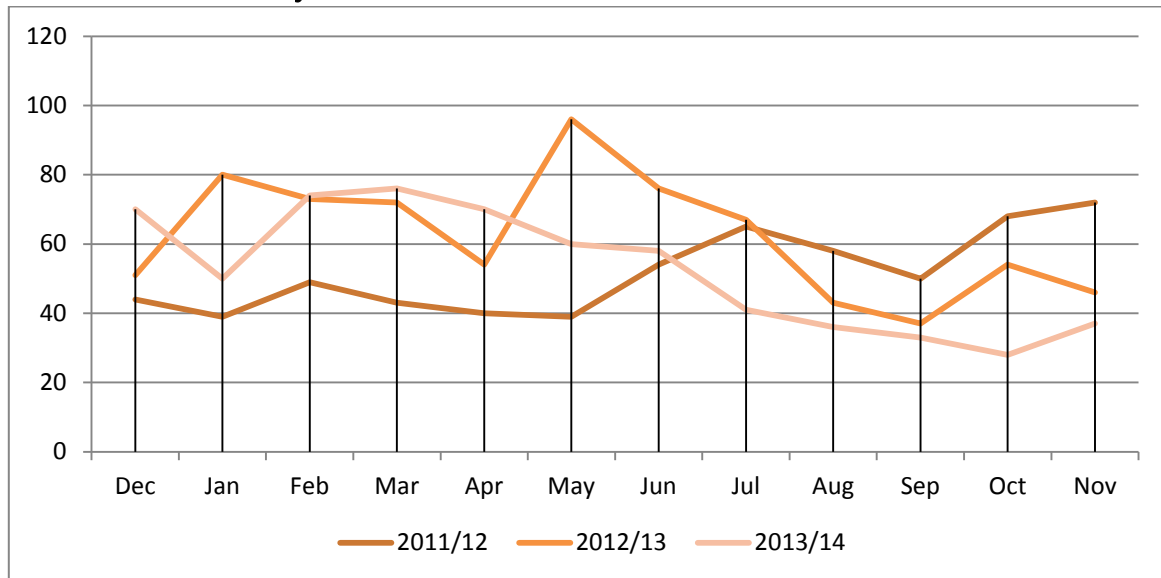
**Chart 11: incidents of BOTD in Sevenoaks District recorded over a three year period**



Burglary Other in the Sevenoaks District (Source: Kent Police)

The trend line on Chart 10 shows BOTD falling over a three year period.

**Chart 12: BOTD: three year breakdown Sevenoaks District**



**A closer look at trends in Burglary Other in the Sevenoaks District (Source: Kent Police)**

Closer analysis of month-by-month recorded offences shows that BOTD has been falling during the period April-November 2014 and at the end of the period was lower than either of the two previous years.



## Priority Ranking

Burglary scored a total of 28 in last year's strategic assessment and scores **24** this year. As such, Burglary remains a key priority for the forthcoming year.

Rationale	None	Low	Med	High	
Community Concern				5	
Trend Increasing			3		
Volume		3			
Level of harm				5	
Poor Performance compared to MSG/County				5	
Partnership can add value			3		Grand Total
<b>TOTAL</b>					<b>24</b>

### Current partnership activity addressing this priority:

- Prolific & Priority Offenders scheme, identifying prolific offenders through ASB Task Group and Strategic meeting
- No Cold Calling Zones, where cold callers are not encouraged
- Neighbourhood Watch Schemes
- Partnership media campaigns around specific crime types
- Community events to raise awareness of the importance of home and shed security
- Advice about rogue traders
- Holiday Loan Schemes
- Smart Water campaign with KCC Community Wardens
- Timer Switches delivered by PCSO/Wardens to repeat and vulnerable victims
- Street briefings done by Police 24hrs after a burglary has been committed in the area
- North West Kent Crime Prevention Panel attending 26 events across the District Jan – Dec 2014
- Being the top area in Kent Police on attending pred pol locations with Community Wardens and other agencies
- New Policing Structure from June 2014 has helped Police be more proactive in communities, which now has Police on duty 24/7

## Recommendations

- Continue proactive target action on hot spot areas using Predictive Police data through the daily Tasking meeting process.
- Help address perception of Burglary through communicating effective key message from all front line staff to residents and Town & Parish Councils, through Newsletters and leaflets
- Task and Finish Groups for prolific offenders or hotspot locations
- Multi-agency street briefings with communities after a Burglary or BOTD have been committed to provide reassurance and to gain evidence.
- The West Kent Reducing Reoffending Group to look at trends around prolific burglars
- Media campaign including Community Safety Newsletter to help promote CSU and education of Burglary & BOTD through Twitter
- North West Kent Crime Prevention Panel (NWKCPP) to attend village days/fetes across the District promoting Home Security
- Link National and local campaigns around specific crime types such as Oil Thefts, Metal Thefts, Fraud and shed/garage breaks
- Research and Development officers to continue to regularly liaise with BT's Crime Intelligence Unit with regard to theft of telephone cable in order to monitor and investigate the problem
- Work with CCTV across West Kent for prolific offenders in town centres
- Initiatives targeted in rural areas such as saddle marking, oil thefts from farm land and expensive garden equipment/power tools
- Work with Police to develop Country Eye
- Link with Police Operations
- Continue to work with KCC Community Wardens on smart water campaign
- Continue working with NWKCPP on attending village fetes and visits to community groups
- Continue media releases and targeted campaigns
- Continue Holiday Loan Scheme
- Continue to deliver Smart Water to vulnerable and repeat victims of Burglary & Burglary other than Dwelling across the District
- Work with the Community Policing Teams in hot spot locations

## Vehicle Crime (TFMV & TOMV)

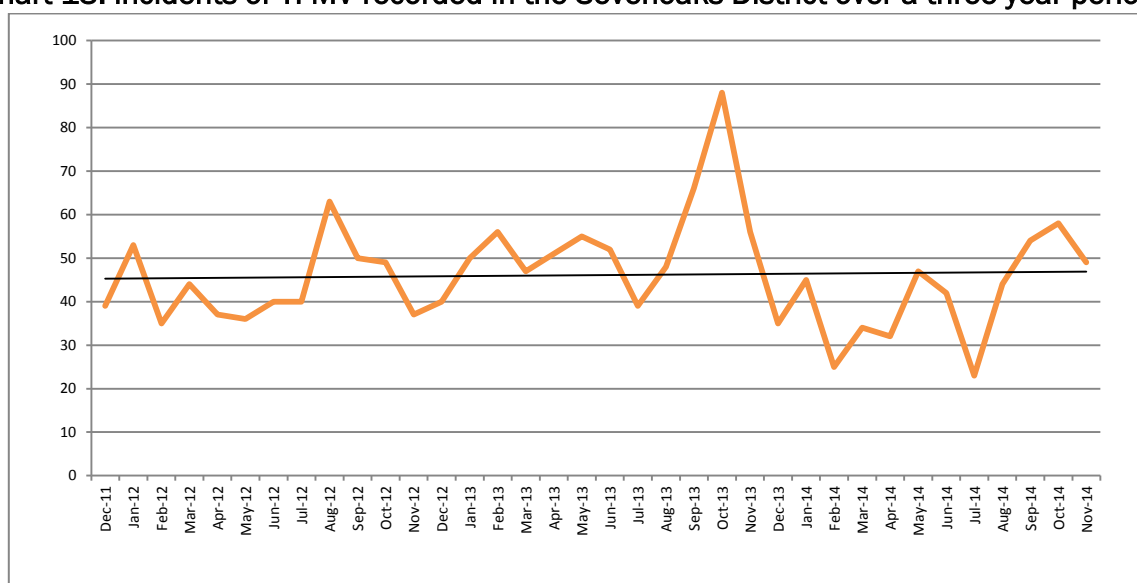
Kent Police data shows Vehicle crime (which includes Theft From Motor Vehicle and Theft Of Motor Vehicle) is down 19.9% compared with the same period last year (April – November 2014). The District ranks very poorly in County comparisons at 2<sup>nd</sup> highest for TOMV and 4<sup>th</sup> highest for TFMV. The District has the 2<sup>nd</sup> highest rate of vehicle crime in its MSG.

The following wards experienced the most incidents of vehicle crime with each area reporting over 30 crimes (April 2014 to November 2014):

- Farningham, Horton Kirby and South Darent
- Fawkham and West Kingsdown
- Swanley Christchurch
- Swanley St Mary's
- Swanley White Oak
- 

The chart below shows that TFMV has fluctuated in the District over the last three years.

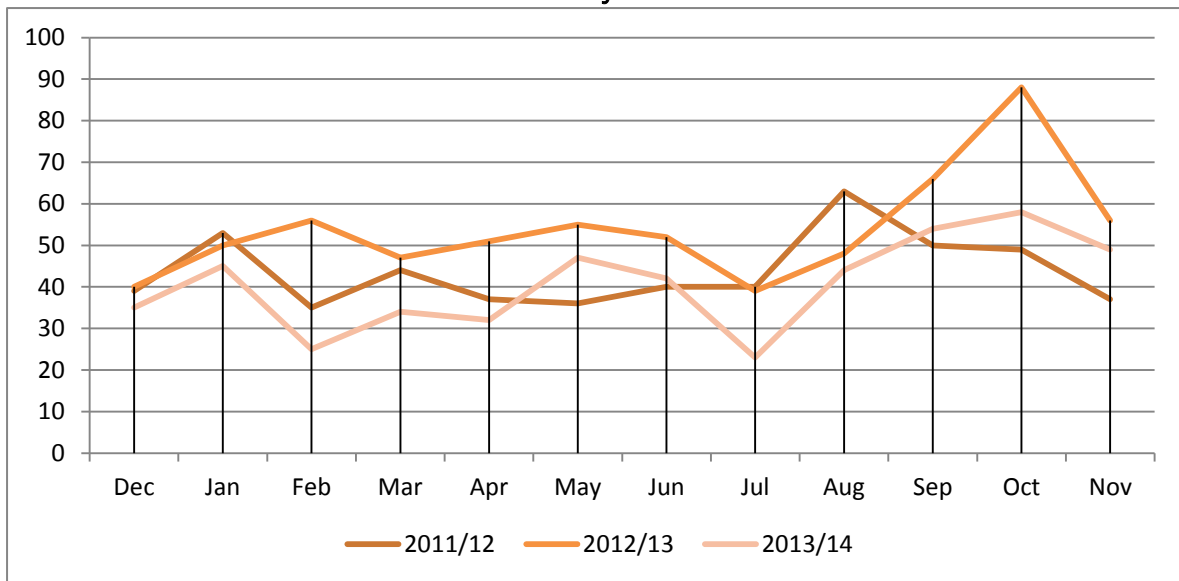
**Chart 13: incidents of TFMV recorded in the Sevenoaks District over a three year period**



TFMV in the Sevenoaks District (Source: Kent Police)

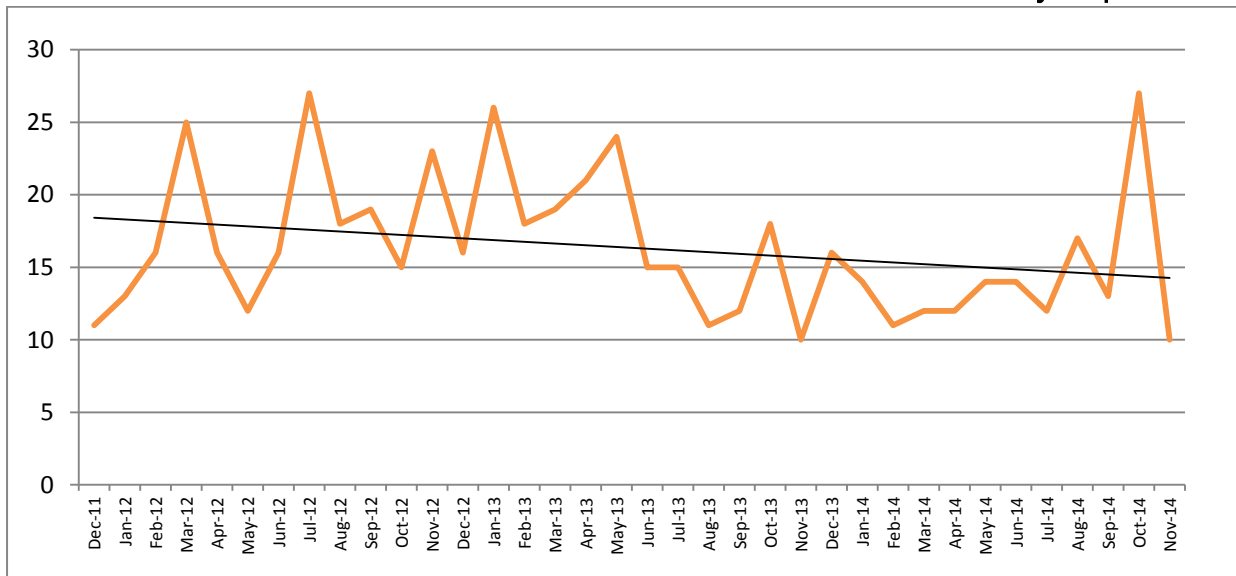
The trend line on Chart 12 shows an small increase of TFMV over a three year period with a peak in September 2013

**Chart 14: Theft From a Motor Vehicle: three year breakdown Sevenoaks District**



A closer look at trends in TFMV in the Sevenoaks District (Source: Kent Police)

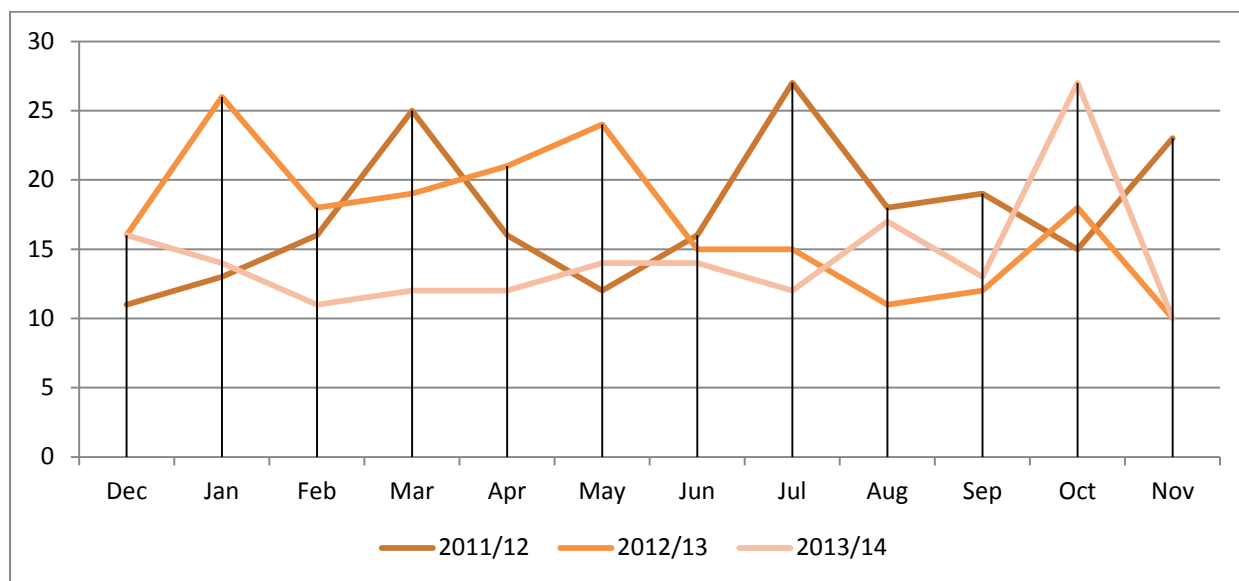
**Chart 15: incidents of TOMV recorded in the Sevenoaks District over a three year period**



TOMV in the Sevenoaks District (Source: Kent Police)

The trend line on Chart 14 shows an decrease TOMV over a three year period.

**Chart 16: Theft of a Motor Vehicle: three year breakdown Sevenoaks District**



TOMV in the Sevenoaks District (Source: Kent Police)

**Theft of a Pedal Cycle**

Pedal cycle theft has had a very slight increase of 7.4% (2 offences) from 27 to 29 offences. Sevenoaks District has the lowest rate in the County and ranks lowest in MSG of theft of a pedal cycle.

The wards with the most incidents of theft of a pedal cycle each reported 3 or more offences (April to November 2014), and are as follows:

- Sevenoaks Kippington
- Sevenoaks Town and St. Johns (4)
- Swanley White Oak

## Priority Ranking

Vehicle crime scored a total of 24 in last year strategic assessment and scores 22 this year. As such vehicle crime is a key priority for the forthcoming year.

Rationale	None	Low	Med	High	
Community Concern			3		
Trend Increasing			3		
Volume			3		
Level of harm				5	
Poor Performance compared to MSG/County				5	
Partnership can add value			3		Grand Total
<b>TOTAL</b>					<b>22</b>

### Current Partnership activity addressing this priority:

- Publicity natural beauty hotspots (keeping valuables safe)
- Identify Priority & Prolific Offenders
- DNA Selecta Marking scheme and Safer Plates Scheme, deterring theft of number plates
- Vulnerable Vehicle Scheme, identifying vehicles with items on display
- PACT Panels
- North West Kent Crime Prevention Panel attending 26 events across the District Jan – Dec 2014
- Being the top area in Kent Police on attending pred pol locations with Community Wardens and other agencies
- New Policing Structure from June 2014 has helped Police be more proactive in communities, which now has Police on duty 24/7

### Recommendations

- Targeted work through the daily tasking meeting to identify hotspot locations and repeat and vulnerable victims and be proactive in those areas
- Predictive Policing with agencies such as Community Wardens
- Target Beauty Spot locations and work with trusts and rangers to raise awareness, high visibility patrols and usage of wildlife cameras
- Promote Safe Plates, work with local dealerships and promote service through PCSO's
- CSU to write to car owners who have left valuables on display
- Advice given through community events, community engagement, e-watch, twitter, face book page and front counter screen

- Looking at repeat locations and tasking of mobile CCTV where possible
- Social networking advising how to look after vehicles through twitter and facebook Reminder of taking valuables with you on back of car park stickers
- Partners to address hot spot locations
- Continuation of Neighbourhood Watch initiatives such as DNA Selecta and UV Pens
- Continued use of the safe plates initiative
- Bike marking initiatives and linking in with TP on bike thefts
- Provide initiative with steering locks
- Address motorbike thefts and work with bike owners

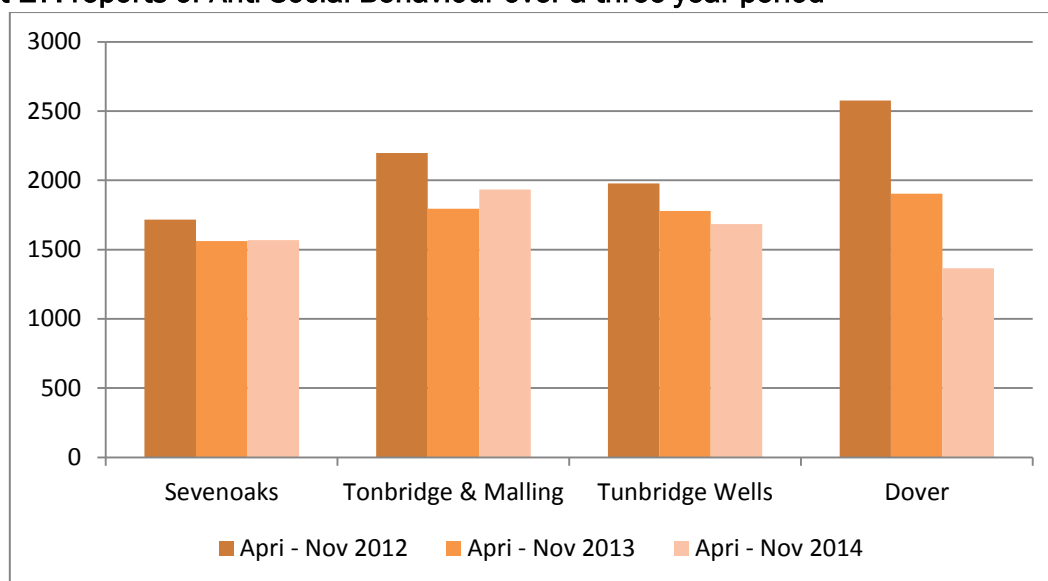
## Anti-Social Behaviour (including Environmental Issues) ↑

Evidence shows that ASB remains one of the priority issues within Sevenoaks District among residents and continues to rank highly in reported figures when compared with other issues and recorded crime within the District.

It is important to note that reported calls of ASB to the Police may or may not have also been reported to other partners so trying to establish a standardised total is difficult.

Despite the high priority of ASB, the District currently has the 2<sup>nd</sup> lowest levels in the County.

**Chart 17: reports of Anti-Social Behaviour over a three year period**



**Levels of Anti-Social Behaviour between the four best ranking areas in Kent (Source: Kent Police)**

The County average has been decreasing since 2010, however the number of ASB incidents in Sevenoaks District has seen slight fluctuations during this time. The Sevenoaks District continues to maintain levels of ASB significantly below the County average.

In addition to calls to the Police set out in Chart 6, SDC has received 190 calls regarding ASB this year, which represents an increase of 47 incidents (32.9%) compared to the previous year.

The most prominent ASB issues reported to SDC are:

- Rowdy behaviour
- Nuisance Behaviour (incl Neighbour disputes)
- Intimidation/Harassment (incl neighbour disputes)

The top 3 wards for reporting anti social behaviour to the District Council were the three Swanley wards followed by Edenbridge South and West.

MOAT Homes do not have an ASB database. However, they were able to identify 'Noise' as the highest reports of ASB.



West Kent Housing received 460 complaints of ASB this year. Highest being Noise at 126 and Harassment at 116.

SDC CCTV Control Room - October 1<sup>st</sup> 2013 to 30<sup>th</sup> September 2014 there was an increase of 115 (26.9%) CCTV assisted arrests for this period, compared to 84 arrests for the previous period.

Anti-social behaviour continues to be the highest crime recorded within the CCTV service much higher than all other crimes reported/detected.

### **Fly Tipping**

Flytipping has seen a slight rise this year and remains one of the most prominent issues. The Sevenoaks District Direct Services at SDC saw for the period October 2013 – September 2014 - 932 reports of fly tipping (25.3% increase, 188 more reports), with 380 of them removed. It is worth noting that an increase in reports does not necessarily indicate an increase in incidents, with often more than one report per incident.

**Table 6 : recorded incidents of fly tipping October 2013 – September 2014 in Kent**

	<b>2008/09</b>	<b>2009/10</b>	<b>2010/11</b>	<b>2011/12</b>	<b>2012/13</b>
<b>Ashford</b>	1123	1,049	876	874	946
<b>Canterbury</b>	1658	1,373	1685	1883	1,664
<b>Dartford</b>	1722	1,635	1637	1328	1,304
<b>Dover</b>	619	438	512	695	969
<b>Gravesham</b>	896	882	801	1153	1,438
<b>Maidstone</b>	1138	1,280	931	1035	931
<b>Sevenoaks</b>	658	529	455	309	355
<b>Shepway</b>	894	857	658	664	1,004
<b>Swale</b>	2629	2,267	1952	1758	1,925
<b>Thanet</b>	376	484	835	1057	904
<b>Tonbridge &amp; Malling</b>	719	609	434	463	416
<b>Tunbridge Wells</b>	531	567	432	392	279
<b>Kent Total</b>	<b>12963</b>	<b>11,970</b>	<b>11208</b>	<b>11611</b>	<b>12,135</b>

Fly capture data (Source: Clean Kent)

Table 6 shows that Sevenoaks District has the second lowest recorded fly tipping in Kent and that there has been a general reduction in the trend of fly tipping in the District since 2008/9. The information from Clean Kent is that one of its most prominent area for fly tippers is in our District, Donkey Lane, Eynsford.

### **Abandoned Vehicles**

Abandoned vehicles have seen a slight increase over the last year, with 109 reports (1 more than same period last year) being made to SDC and 7 vehicles being removed. The low proportion of vehicles removed is in the most part due to the vast majority of those vehicles reported either being driven or declared SORN (Statutory Off Road Notice) and parked off-road.

### **Graffiti**

Graffiti reports to the Council have decreased by 30.7% (12 reports) this year with 27 recorded incidents. There were 13 offensive graffiti reports between October 2013 and September 2013 all of which were removed within the 48 hour deadline set by Sevenoaks District Council.

## Priority Ranking

Anti-Social Behaviour scored a total of 22 in last years strategic assessment and scores 24 this year. In line with the long-term Strategic aims of the Community Plan<sup>13</sup> and this year's data, Anti-Social Behaviour remains a key priority for the forthcoming year.

Rationale	None	Low	Med	High	
Community Concern				5	
Trend Increase			3		
Volume			3		
Level of harm				5	
Poor Performance compared to MSG/County			3		
Partnership can add value				5	Grand Total
<b>TOTAL</b>					<b>24</b>

### Current Partnership activities addressing this priority:

- Partnership working, information sharing and case follow ups in daily tasking meetings allow CSU to monitor and respond to ASB
- Work with individuals through the monthly ASB task group, which now includes Troubled Families and Priority and Prolific Offenders
- Local community payback schemes
- "Grimebuster" weekly graffiti project
- All offensive graffiti removed within the 48 hours deadline set by Direct Services
- Promotion of Neighbourhood Watch and E-watch
- Environmental Visual Audits in in New Ash Green, Azelea Drive, Swanley, Gorse Wood Hartley, Spitals Cross, Edenbridge and Swanley Railway Station.
- There were also specific location meetings regarding flytipping hotspot areas in Spitals Cross and Spode Lane, Eynsford.
- PACT Panels (current)
- Responding to reports of anti-social behaviour , acknowledgement within 2 working days and full reply within 25 working days of initial report
- Use of mobile CCTV cameras to deter anti-social behaviour, monitored by CSU
- PSCOs and Wardens reporting abandoned vehicles, graffiti and dumped rubbish/fly tipping
- Fixed penalty notices for littering and dog fouling
- SDC/KCC abandoned vehicle process and vehicle surrender scheme
- Supporting Swanley White Oak action group
- Supporting funded projects with partner agencies to deliver opportunities to young people
- Supporting projects to help reduce ASB and environmental projects in the community

<sup>13</sup> Safe Communities, action 2: tackle Anti-Social Behaviour and environmental crime.

- Wildlife Cameras to gain evidence for Clean Kent against fly tipping
- Task and Finish Groups for repeat and vulnerable victims of ASB, offenders of ASB and repeat hotspots of ASB
- Getting ready for the new ASB Powers
- Troubled Families Project
- Police continue to use Automatic Number Plate Recognition cameras
- Increased community engagement using Police Contact Points in rural and isolated areas
- Licensing team at Sevenoaks District Council performed reviews licensed premises
- West Kent Housing use their new processes which allow ease of recording complaints of ASB and use the Risk Assessment Matrix to identify vulnerable and repeat victims
- Kent Community Warden Service has a new recruit to cover Westerham area, wardens now have enhanced/level 2 Police vetting and Themis (ASB Case Management System) training is underway
- SDC's CCTV Operators work with the ASB Task Group to monitor and gather intelligence on named individuals.
- Training on Themis a joint agency ASB database
- Work with the charity Reform Restore Respect allowing us to target schools to educate pupils in the consequences of criminal behaviour

#### **Recommendations**

- Increase number of prosecutions for fly tipping through camera deployment
- PCSOs and wardens to continue to report abandoned vehicles, graffiti and dumped rubbish.
- Promote legal ways to dispose of rubbish and promote the Moat and WKHA promise to deter fly tipping
- Proactively celebrate good news stories through InShape, Partners publications and through Social Media
- Deploy mobile cameras across the District to deter ASB and Criminal Damage through the CSU
- Respond to ASB issues through the daily Tasking Process and report back in 100% of cases
- Work with specific families through the Troubled Families Project
- Use the ASB Task Group to educate, support and use enforcement of perpetrators of ASB
- Promotion of the CSP Newsletter
- Work with communities to reduce ASB (including environmental issues) through PACTs and EVAs
- Task & Finish Groups for repeat offenders, victims and hotspot locations
- Continue to make referrals to the YISP Panel
- Continue where possible and with match funding projects to help families, individuals and communities
- Continue to promote Neighbourhood Watch, Country Eye and e-watch
- Continue to use CSU Twitter to update residents, businesses and partners of community safety issues including ASB
- Continue working with Probation's Community Payback scheme

- Continue to use daily taskings to take action on ASB and community safety issues with partners
- Continue to use PACT to identify key community concerns relating to anti-social behaviour and prioritise hotspots
- Continue to target fly-tipping hotspots with Clean Kent
- Continue to publicise the Sevenoaks District Community Safety Unit
- Continue to target through the CSU daily briefings repeat and vulnerable victims of anti-social behaviour
- Work with agencies to deliver the new ASB Powers where necessary
- Start working on Themis for quick information sharing on ASB cases (wardens and Police have access so far)
- Use Community Policing Team to work with us on certain areas
- Joint visits with PCSOs/Wardens/Joint Family Management Officer
- More proactive work with Mental Health teams

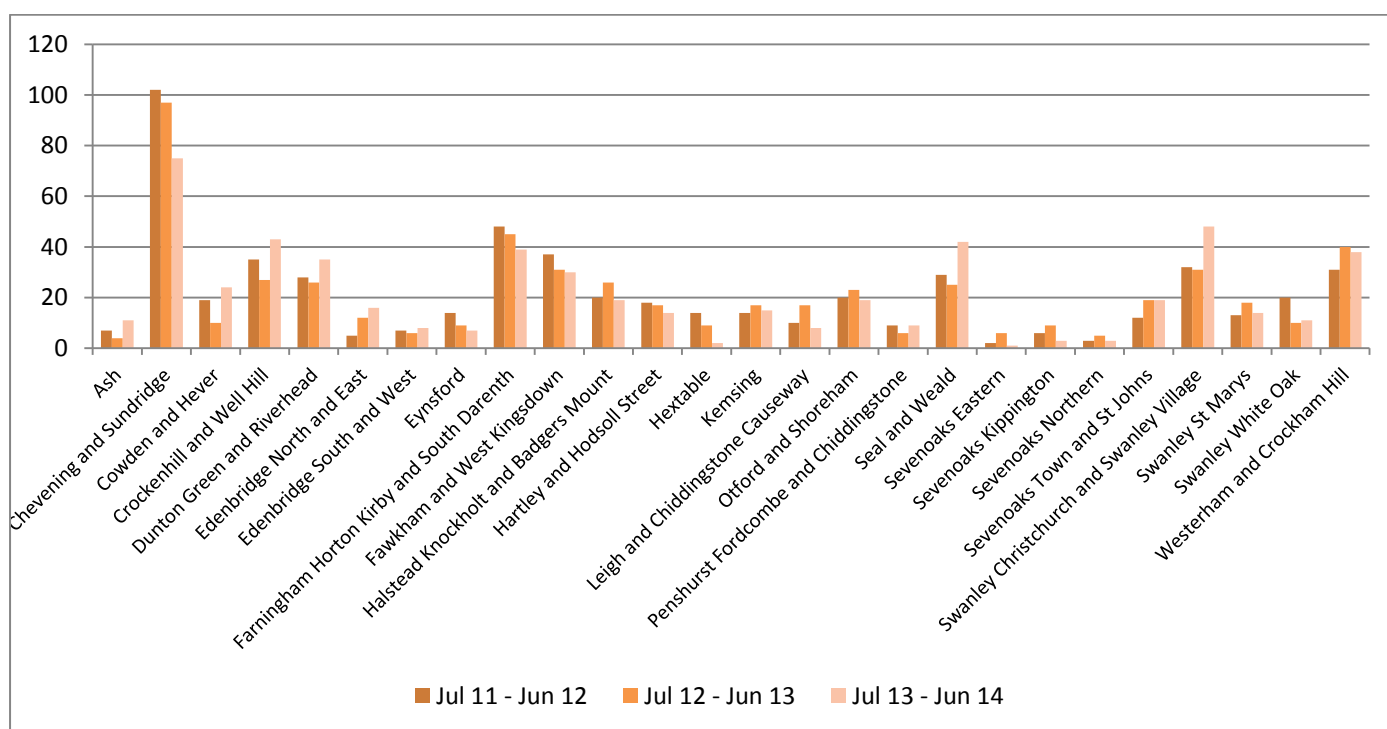
## Road Safety (including of speeding)

### Road Traffic Accidents

Throughout Sevenoaks there are major trunk roads i.e. M25/A21 which facilitate the majority of traffic through the District. Unfortunately the figures for major trunk roads and local roads are not available separately.

KCC Highways figures released for July 2013 - June 2014 show a slight increase (1.3%) in RTA casualties in the District compared with the same period last year. 553 RTA casualties were recorded during this period and the Sevenoaks District has the fourth highest number of RTA casualties in the County, after Maidstone, Dartford and Swale. 12.6% of all RTA casualties were Killed or Seriously Injured (KSI) with Sevenoaks District also reporting the fourth highest number of KSI RTA casualties in the County.

Chart 18: RTA casualties over a 3 year period



RTA Casualties across the Sevenoaks District (Source: KCC Highways)

The wards that experienced the highest number of RTA casualties were Brasted, Chevening and Sundridge and Farningham, Horton Kirby and South Darenth.

Road Safety for young people appears to be good in comparison with the rest of the County – Sevenoaks was in the middle of the table ranking joint 6<sup>th</sup> lowest with Canterbury and Dartford on number of child casualties recorded in Kent. July 2013 – June 2014 saw 5 casualties aged 16 or under, which is an increase on the previous year of 5.

## Speed Watch

Speeding and perception of speed is a high concern for residents across the District and has featured in all PACT Panel's action plans.

Speed Watch training has worked well in the District with residents being trained by Kent Police to monitor the speed of vehicles passing through their community. November 2014 reported a total of 43 District locations for Speed Watch and there have been over 175 residents trained, over a quarter of all volunteers in Kent. Between December 2013 and November 2014, a total of 1096 letters were sent out to the owners of vehicles speeding within the District thanks to the Speed Watch initiative.

## Priority Ranking

Road Safety scored a total of 22 in last year strategic assessment and same again this year. It is also in line with the long-term strategic aims of the Community Plan<sup>14</sup> and this year's data, Road Safety remains a key priority for the forthcoming year.

Rationale	None	Low	Med	High	
Community Concern				5	
Trend Increasing			3		
Volume		1			
Level of harm			3		
Poor Performance compared to MSG/County				5	
Partnership can add value				5	Grand Total
<b>TOTAL</b>				<b>22</b>	

### Current Partnership activity addressing this priority:

- Carmageddon – activity aimed at demonstrating the effects of reckless driving
- Speed watch
- Operation Zigzag – aimed at discouraging from parking outside school entrances
- Working with landowners to reduce off road- nuisance
- Daily and monthly tasking and coordination
- National Road Safety Week (incl a Road Safety conference and police operations)
- Additional Funding from Police helped with 2 extra speed boards for speed watch

<sup>14</sup> Safe Communities, action 5: tackle speeding vehicles and improve safety for all road users, including pedestrians and cyclists.

## Recommendations

- Continue with Speed Watch. Identify a cohort of volunteers who could be tasked across the District to speeding hotspots
- Minimum of 4 Multi-Agency events to address speed enforcement
- Education on road safety to be delivered through schools including Pedestrian and Cycle Safety
- Work with Fire Service to do work in schools and on License to kill promotional activity Identify areas through the new predictive policing model and through the CSU
- Neighbourhood officers to undertake speed enforcement within their areas
- Work with KCC regarding Operation Zig Zag
- Link with national and local campaigns incl Road Safety Week
- Continue to target top road casualty wards for Carmageddon operations
- Continue to offer Speed watch to resident's where speeding is a priority

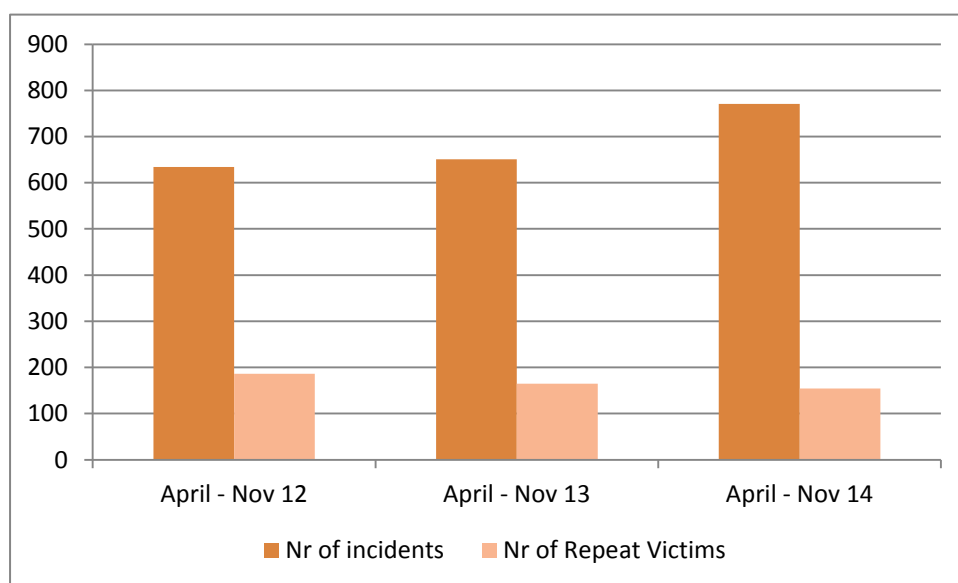


## Domestic Abuse

Domestic abuse has seen an increase in the number of incidents and the number of repeat victims this year. There have been an additional 120 incidents of domestic abuse recorded within the Sevenoaks District which represents a 18.4% increase on the previous year (April – November 2014). Sevenoaks District has also seen an increase in the number of recorded repeat incidents of domestic abuse with 12.7% more (21 reports, totalling 186).

Whilst on the surface this could reflect a rise in cases of domestic abuse, the increase could also be interpreted positively with more people feeling able to come forward and report domestic abuse to Police. It is important to remember that these figures are only representative of domestic abuse that was reported to the Police and it is widely recognised that there remains a figure of domestic abuse which remains unreported. Despite the recorded increase within the District, Kent figures for April 2014 to November 2014 rank Sevenoaks as lowest for rates of domestic abuse and repeat victims in the County. Kent police figures indicate the rates of domestic abuse for Sevenoaks District have been the lowest in Kent for the past three years.

**Chart 19 shows the number of Domestic Abuse Incidents and repeat victims over a 3 year period.**



**Domestic Abuse Incidents and Repeat Victims (Source: Kent Police)**

This trend shows that although incidents are going up the number of repeat victims is going slightly down.

The Multi Agency Risk Assessment Centre (MARAC) assesses high risk cases.

Between April 2013 – March 2014 Kent’s 13 MARACs heard 1578 cases, identifying 2060 children within households where high risk domestic abuse is taking place. This is an increase on the 1357 cases heard in the previous 12 month period.

Table 7 shows the number of MARAC cases from April 2014 – September 2015


**Table 7: MARAC cases April – September 2014**

	Medway	Maidstone	Swale	Dartford	Gravesham	Tun Wells	Ton & Malling	Sevenoaks	Ashford	Folkestone	Dover	Canterbury	Thanet	Total
<b>Total Number of Cases</b>	423	130	146	141	170	90	81	76	97	87	79	89	224	1833
<b>Number of Repeat Cases</b>	131	23	32	37	63	22	10	19	17	20	22	27	65	488
<b>Repeat Cases %</b>	31%	18%	22%	26%	37%	24%	12%	25%	18%	23%	28%	30%	29%	26.62%
<b>Number of children</b>	540	177	190	175	189	104	113	89	138	150	121	135	299	2420

MARAC Cases across Kent (Source: Kent & Medway Domestic Abuse Strategy Group)

### Priority Ranking

Domestic Abuse scored a total of 19 in last year’s Strategic Assessment and scores 26 this year. In line with the long-term aims of the Community Plan<sup>15</sup>, Domestic Abuse remains a priority for the forthcoming year.

Rationale	None	Low	Med	High		
Community Concern			3			
Trend Increasing				5		
Volume				5		
Level of harm				5		
Poor Performance compared to MSG/County		3				
Partnership can add value				5		<b>Grand Total</b>
<b>TOTAL</b>				<b>26</b>		

<sup>15</sup> Safe Communities, action 4: support vulnerable and repeat victims of crime and Anti-Social Behaviour.

### Current Partnership activity addressing this priority:

- Community Domestic Abuse Perpetrators Programme (CDAP) – support and assistance to men wishing to stop the cycle of abuse
- Attendance and training of MARAC
- Area briefings and daily briefings to raise awareness of high risk offenders with Neighbourhood teams.
- Neighbourhood Teams to deliver DA service to call outs to DA incidents
- Domestic Abuse Action Plan
- District Freedom programme set up and 4 programmes run
- Independent Sexual Violence Advice Service
- Domestic Abuse One Stop Shop Swanley/Sevenoaks
- Annual DA Conference held for front line workers in Sevenoaks District
- Week of campaigns through National DA week (usually November)
- Partnership contributed towards funding of DAVSS for all victims of Domestic Abuse
- Respect programme for young people in schools
- Refer high risk victims to MARAC
- Work with Police and DAVSS working with the travelling community on Domestic Abuse
- Work with DAVSS and Schools on young persons project
- Received funding from other agencies to deliver projects

### Recommendations:

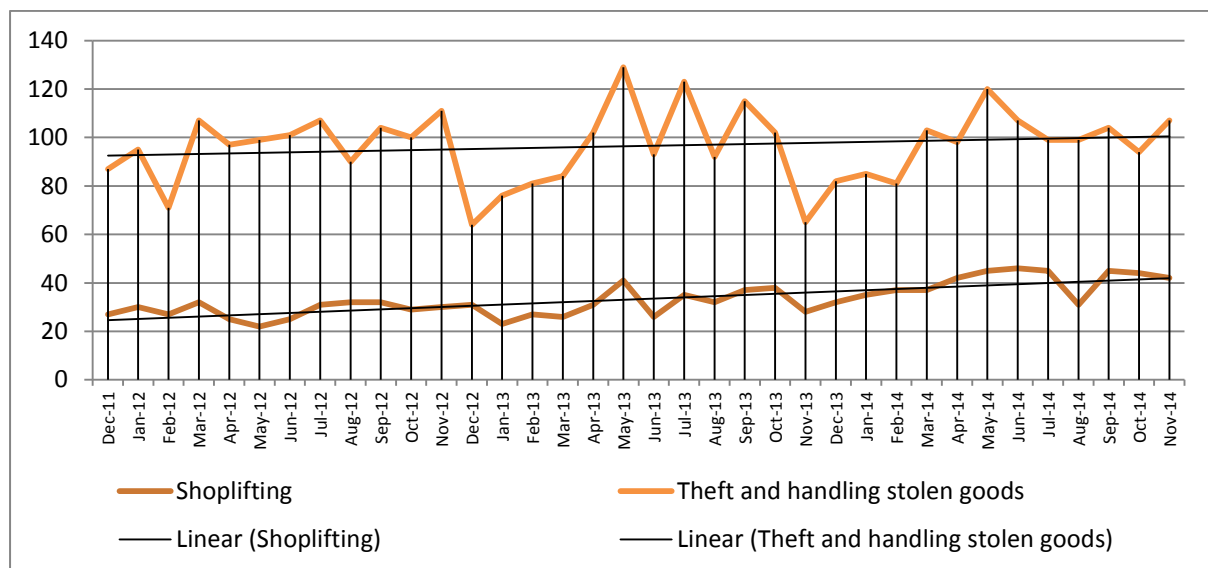
- In line with the Domestic Abuse, Children's report recommendations:
- Make the links with Substance Misuse (mainly alcohol)
- Update the West Kent Directory
- Attend Kent DA Forums
- Raise awareness and sign posting to local and county wide services and resources including refuges, particularly targeting repeat victims
- Focus on young people and healthy relationships. Dedicated resources across the District using National campaigns and local services
- Continue to support local funded programmes such as CDAP, ISVA, Freedom, DA Drop In Centre & Youth project. Work to increase numbers attending these programmes
- External Evaluation of DA Services funded by CSP
- Consider Domestic Abuse as a marker for Phase 3 of Troubled Families
- Joint meeting with Substance Misuse mid year
- DA Working Group to take forward more initiatives
- Hold annual conference and campaign at certain times eg Christmas, sporting events and National DA week
- Update and make sure targets are achievable in the Partnerships DA Working Group Action Plan
- Continue where possible funded projects (ISVA, Freedom, Choices, CDAP, DAVSS)
- Continue training of MARAC and making referrals Continue referrals and attending MARAC

- Continue Freedom Steering Group
- Continue with ISVA Service
- Continue the Community Domestic Abuse Programme
- Continue Domestic Abuse (sexual respect) programme for young people in secondary schools
- Work with harder to reach groups regarding Domestic Abuse and sexual respect
- Deliver training on FGM

## Theft & Handling Stolen Goods (focussing on Shoplifting)

Theft and Handling Stolen Goods and Shoplifting have both increased. 1.4%, with 13 more offences recorded (Theft) and 26.9% 72 offences recorded for Shoplifting.

**Chart 20: theft and handling stolen goods and shoplifting over a three year period in Sevenoaks District**



**Theft and handling and shoplifting in the Sevenoaks District (source: Kent Police)**

Chart 19 shows that whilst the number of recorded theft and handling stolen goods fluctuates on a monthly basis, the trend line shows that it is has been increasing slightly over the three year period. Despite this, the Sevenoaks District still has the 2<sup>nd</sup> lowest rate per 1000 population in the County. In contrast, the District has the 4<sup>th</sup> lowest rate in MSG but the crime rate still sits just below average.

### Shoplifting

Sevenoaks District has seen an increase in the number of shoplifting offences this year. Despite this the District ranks 3<sup>rd</sup> lowest crime rate in the County and 4<sup>th</sup> best in its MSG.

As with the previous year’s strategic assessment, despite the Sevenoaks District’s relatively good performance when compared to the rest of Kent, combined theft offences account for the largest proportion of crime in Sevenoaks.

The Sevenoaks District Business Crime Reduction Partnership has struggled to keep business member in the economic climate and has had a decrease of membership. Although some new shops in the Town centres have joined the scheme, some of the smaller businesses have pulled out.

## Priority Ranking

Theft and handling of Stolen Goods and Shoplifting scored a total of 18 in last years strategic assessment and scores 20 this year. As such, these crime types remains a key priority for the forthcoming year.

Rationale	None	Low	Med	High	
Community Concern			3		
Trend Increasing				5	
Volume				5	
Level of harm			3		
Poor Performance compared to MSG/County		1			
Partnership can add value				5	Grand Total
<b>TOTAL</b>					<b>17</b>

### Current Partnership activity addressing this priority:

- Safer Town partnership still supported and achieved an outstanding achievement
- Work with CAB around debt
- Community events around purse dipping
- Working with security companies to deter thefts
- Attend boot fairs/markets
- Work with PPOs

### Recommendations:

- Develop and expand the Business Crime Reduction Partnership across Sevenoaks District to include Safer Socialising
- Target repeat offenders of acquisitive crime through the Offender Management Unit
- Publicise arrests and convictions through Social Media especially around BCRP work
- Police Mobile Unit and NWKCPP to attend village and fete days
- Joint operations at boot fairs/markets
- Information around loan sharks and pay day loans
- The CSP produce a leaflet for residents regarding their own property and worked specifically with repeat and vulnerable residents and businesses.
- Continue with promotion of the Business Crime Reduction Partnership (BCRP)
- Continue community events

## Substance Misuse

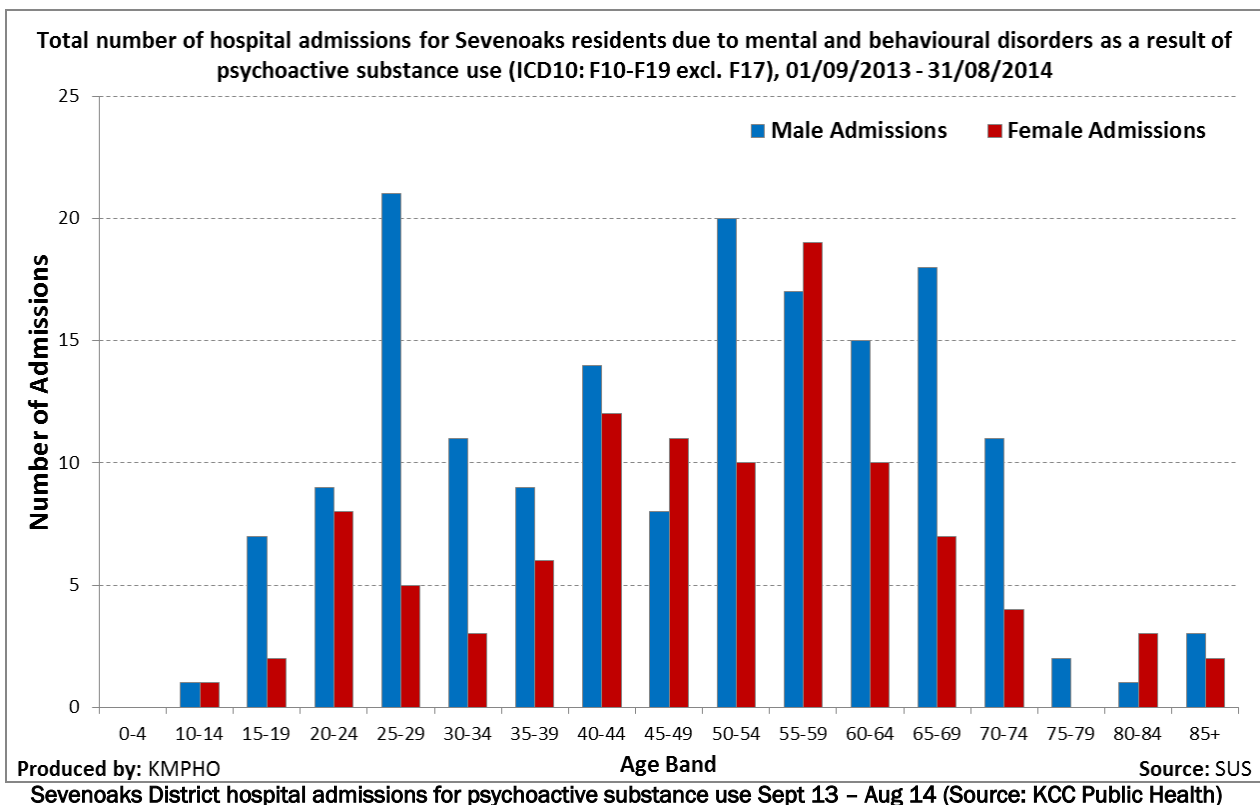
### Drugs

Since April 2013, drug offences are no longer recorded in the Victim Based Crime figures released by Kent Police. However, figures collated in iQuanta show total drug offences are down 25.7% (48 offences) with 142 recorded this year (April – November 2014). Sevenoaks has the lowest rate in the County and ranks 1<sup>st</sup> in Kent.

Kent Police have provided rolling data on Drug Offences and this has also seen a decrease of 2.6% (4 offences from 158 to 154).

1 September 2013 – 31 August 2014 there were a total of 270 hospital admissions from 224 individuals for mental and behavioural disorders due to psychoactive substance use (including alcohol and drugs) in the District. This is the second lowest figure in Kent.

**Chart 21: hospital admissions for mental and behavioral disorders due to psychoactive substance use over a 12 month period across Sevenoaks**

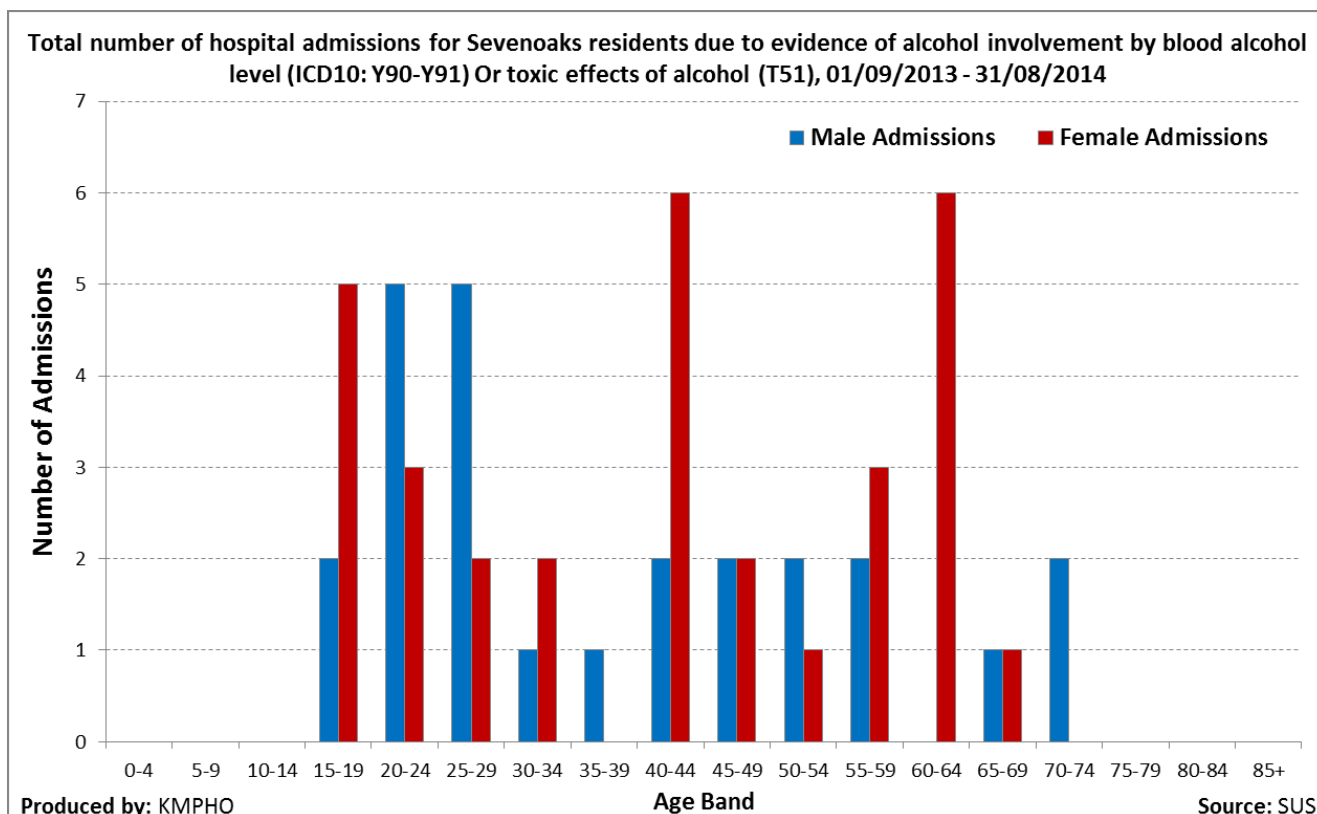


Ash and Edenbridge North and East are the wards with the highest number of admissions. Occurrences are generally greater amongst males than females, and are highest in males aged between 25-29 and 50-54 age groups

## Alcohol

Until recently, alcohol misuse was measured using alcohol attributable hospital admission rates which have been increasing year on year on a District and County level<sup>16</sup>. It is generally felt that these rates no longer accurately reflect alcohol admission trends as some 'attributable' conditions have undergone massive rises in admission rates over recent years and this is only partly attributable to alcohol.

**Chart 22: hospital admissions for alcohol over a 12 month period across Sevenoaks**



Sevenoaks District hospital admissions for alcohol misuse Sept 13 – Aug 14 (Source: KCC Public Health)

<sup>16</sup> Kent has seen a steady increase of alcohol related hospital admissions over the past ten years and alcohol remains the most common substance for those seeking treatment; this year (June 2012 to May 2013) hospital admissions for evidence of alcohol involvement by Blood Alcohol has seen a Countywide increase of 76 (8.2%). Sevenoaks has seen the sharpest rise in numbers during this period (45.5%, 25 additional residents), making a total of 80 alcohol related hospital admissions this year.



		2012/13 YTD	Q1	Q2	Q3	Q4	2013/14 YTD	
All	Number of new clients accessing structured treatment per quarter	69	20	16	27	31	94	
	Total number of clients in effective treatment	219					241	
	Treatment exits	Planned	70%					62%
		Unplanned	30%					38%
Drugs	Total number of clients in effective treatment		37	40	48	47	172	
	Treatment exits	Planned					69%	
		Unplanned					31%	
	Alcohol	Total number of clients in effective treatment		8	15	20	26	69
Treatment exits		Planned					55%	
		Unplanned					45%	

**Table 8 - level of access to, and engagement with substance misuse treatment services in Sevenoaks District. Figures are split between drug and alcohol, which is determined by an individual's primary substance of choice (Source KCC Public Health)**

		2011/12 YTD	2012/13 YTD	Q1	Q2	Q3	Q4	2013/14 YTD
Number of young people starting a new treatment journey		6	7	0	7	7	0	14
Total number of young people engaged with structured substance misuse services		11	10					28
Treatment exits	Planned	67%	100%					80%
	Unplanned	33%	0%					20%

**Table 9 - details the level of access to, and engagement with specialist young people's substance misuse treatment services in Sevenoaks District (Source KCC Public Health)**

To be defined as being in effective treatment, a client must have been retained in treatment for 12 weeks and have started one or more modalities. Furthermore, a planned exit refers to clients who have completed treatment successfully or transferred to another treatment service and contact with the service has been made. Treatment exits are provided as a proportion of all exits, per substance type.

Substance misuse treatment services in Sevenoaks District are provided by CRI, who are commissioned by Kent Public Health to deliver an integrated community drug and alcohol recovery service, offering integrated support to individuals across West Kent. CRI commenced services in West Kent from 1st April 2012.

CRI work closely with a range of partner agencies to improve outcomes for substance misusers. Greensands, a supported housing project in Sevenoaks, is assisted by CRI through the provision of group work and peer support to residents for their substance misuse. A joint working programme has also been developed with Sevenoaks area MIND, to deliver CRI programmes on a weekly basis to Greensands residents and a bi-weekly drop in and referral service for MIND service users. This will facilitate better access to drug and alcohol services for these clients.

The CSP also funds Kenward Trust to deliver Substance Misuse Youth Services Tier 1 and 2. January – November 2014 they have engaged with over 250 young people, visited over 25 hotspots that have been a community concern and engaged with schools to deliver substance misuse projects

## Priority Ranking

Substance Misuse scored a total of 18 in last years strategic assessment and scores the same again this year. As such substance misuse remains a key priority for the forthcoming year.

Rationale	None	Low	Med	High	
Community Concern				5	
Trend Increasing			3		
Volume			3		
Level of harm			5		
Poor Performance compared to MSG/County		1			
Partnership can add value				5	Grand Total
<b>TOTAL</b>					<b>22</b>

### Current partnership activity addressing this priority:

- Enforcement of premises doing most harm to communities, including Safer Street operations
- Sensible drinking campaigns
- Kent Community Alcohol Project in Edenbridge, Swanley & Hextable – a multi-agency approach to reducing under age sales of alcohol and street drinking
- Restorative Approaches training
- Young person’s substance misuse worker (detached youth work and intervention in schools)
- Alcohol Awareness week (Government campaign)
- Substance Misuse Task Group Action Plan addressing enforcement, education and support around substance misuse
- Addressing proxy sales around the District(purchase of alcohol by adults on behalf of underage drinking
- Link with Domestic Abuse incidents
- Stop Smoking campaign
- Substance Misuse Conference held
- Legal High Training
- DUST Training

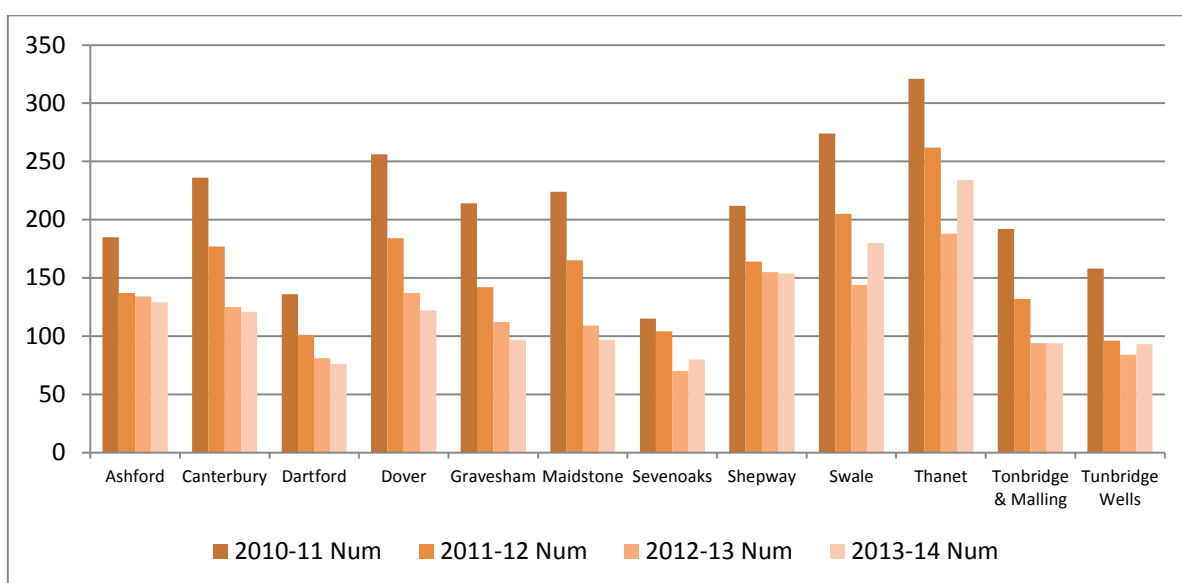
### **Recommendations:**

- Collate and publish West Kent Substance Misuse directory of services
- Cross working with Domestic Abuse Working Group
- Update Drugs in the Workplace policy
- Alcohol Awareness Week 2015 (Home Office will release date)
- Address Legal Highs
- Preventative and early intervention youth work to address identified local needs and improve well-being of young people
- Use a partnership approach to address underage drinking where it is reported by communities as a problem
- Structured interventions through Troubled Families where Substance Misuse is an issue
- Create “Recovering Communities” such as Non Alcohol Bars and Social Enterprises
- Work with local employers to raise awareness on drug and alcohol issues and where to go for early interventions
- Address work around Legal Highs to include prescribed medication. Training and support for front line workers
- Use of Social Media to get information to all residents across the District with a focus on young people
- Detached work in tasked areas by CSU for substance misuse worker
- Continuation to increase numbers of people accessing substance misuse services.
- Continue to monitor the need for KCAP in other parts of the District.
- Police, Wardens and PCSOs to continue to gather intelligence on underage and proxy sales at every opportunity.
- Continue Young People’s Substance Misuse worker
- Continue work with Sevenoaks District Health Action Team

### Youth offences

There has been a slight increase in the number of youth offenders (under 18 years) within the Youth Offending Service (YOS) for the first time in two years, with figures for the District rising by 14.3% from 70 to 80 offenders over the period July 2013 to June 2014. Swale and Thanet were the only other two areas with an increase. 0.7% of the total District population of 10 to 17 year olds are recognised as youth offenders, this is an increase on last year’s figures (0.6%). This District has the 2<sup>nd</sup> lowest rate in the County and is significantly below the Kent average.

**Chart 23: Youth Offences recorded throughout the County over a four year period**



Youth Offences recorded across the County (source: Kent Integrated Youth Service)

The three types of offences most frequently committed by children and young people in Sevenoaks were:

- Theft and Handling Stolen Goods (21.6%)
- Violence against the Person (16.6%)
- Criminal damage (16.8%)

The breakdown in offenders by gender continues to show that the majority of offences are committed by males. Kent Police notified YOS of 34 First Time Entrants (FTEs) to the Kent Youth Justice System between June 13 – July 14 of young people in Sevenoaks District. This is an increase of 13 compared to same period last year.

### Not in employment, education or training (NEET)

Using KCCs data for October 2014, the number of young people recorded as NEET in Sevenoaks District has decreased from 89 to 65 compared to same period last year (a reduction of 26.9%) over a 12 month period. This is the lowest number of NEETs in the County.

## **Schools**

Schools Data on full time and part time exclusions provided by KCC is not a true record as it the data they have provided has included wards from other Districts/Boroughs and is therefore not a true record. The data does show a reduction in Fixed and permanent exclusions but this again is not a true record

The data provided for bullying incidents across Kent is not consistently recorded so any analysis would be inaccurate. Whilst bullying is undoubtedly an issue for some young people, data is not included in the Assessment due to inconsistent reporting and recording methods.

The Kent Police Safer Schools Officer District posts were ended in May 2014 and a Police Divisional post was set up, with PCSOs attending primary schools and focussing on e-safety..

Sevenoaks District Council has been visiting schools with partner agencies to deliver e-safety and did an e-safety campaign in February 2014 delivering mouse mats to local schools using a local celebrity and setting up a website.

## Priority Ranking

Youth Issues scored a total of 17 in last year's strategic assessment and scores 17 again this year. As such, Youth Issues remain a key priority for the forthcoming year.

Rationale	None	Low	Med	High	
Community Concern				5	
Trend Increasing		1			
Volume		1			
Level of harm				5	
Poor Performance compared to MSG/County	0				
Partnership can add value				5	Grand Total
<b>TOTAL</b>					<b>17</b>

### Current partnership activity

- Restorative justice projects
- Safer Schools Partnership
- Restore respect Reform Workshops
- Anti-bullying projects to include cyber bullying
- Services developed in Children's Contact Centres and the VOC TECH (Swanley)
- PACT (young people attending PACT meetings)
- Sevenoaks Summer Activity Programme through VAWK and West Kent Extra
- 8-12s project through West Kent Extra
- Power Project
- Anti-Social Behaviour Tasking Group
- Community Safety Unit daily and monthly tasking and coordination
- Community Payback schemes
- Detached Youth Work
- Link with the Try Angle Awards
- Roll out Domestic Abuse (sexual respect) programme within secondary schools across the District
- YISP Project – West Kent Steering Group
- Set up Judo Programme
- E-Safety Project linking in with Internet Safety Day (Feb 2015)

## Recommendations

- Work more proactively with KIASS and CSK
- Set up a data monitoring system to identify young people's issues
- Maintain low level number of young people entering the criminal justice system for the first time
- Target detached youth work through the CSU
- Continued promotion of E-Safety creating a centre for resources and continued cyber bullying programmes. Explore CEOP resources
- Work with partners to help young people transition from Education to Employment
- SAFE- Support and Develop Services in Health Suicide Awareness for everyone
- Promote work with young people
- Refer children and young people in need of support to the Common Assessment Framework process.
- Troubled Families Project – a new project focussed on families with complex needs
- Work with KCC Youth Service and town & parish councils on their summer schemes
- Sencio Youth Project – to increase youth provision in leisure centres
- Continue Judo project in the District
- Continue and monitor Power Project referrals.
- Continue the 8-12s projects through West Kent Extra.
- Investigate the potential for further intergenerational projects in priority wards identified in this assessment.
- Continue with detached youth work across the District
- Continue to roll out Domestic Abuse (sexual respect) programme within secondary schools across the District
- Safeguarding of young people

## Part four - Conclusion

---

This strategic assessment sets out the priorities that the Community Safety Partnership (CSP) should focus on and identifies the issues that should be considered in developing the 2015-16 action plan.

1. The Community Safety Partnership endorses the priorities set out below, as discussed through this Assessment.
2. Will consider targeted activities in specific geographical areas.
3. Will review current service provision in the light of current needs to ensure effectiveness and efficiency.
4. Consider targeted awareness-raising activities for specific crime types.
5. Continue to review activity on a regular basis to ensure appropriate and proportionate resourcing.

Levels of recorded crime in the Sevenoaks District have seen a slight decrease in the last year with a few notable increases in specific types of offence. Where new trends in particular types of crime and anti-social behaviour have been identified, recommendations have been made by Sevenoaks Community Safety Partnership to help address the priorities identified for the forthcoming year.

The Sevenoaks District CSP agreed priorities for 2015-16 are as follows:

- Anti-Social Behaviour incl Environmental Crime
- Burglary incl BOTD
- Vehicle Crime
- Road Safety
- Substance Misuse
- Youth Issues
- Domestic Abuse
- Theft & Handling Stolen Goods and Shoplifting



## Glossary

---

- **ABA** – Acceptable Behaviour Agreement
- **ANPR** – Automated Number Plate Recognition
- **ASB** – Anti Social Behaviour
- **ASBO** – Anti-Social Behaviour Order
- **BCUs** – Basic Command Units
- **CDRP** – Crime and Disorder Reduction Partnership
- **CSP** – Community Safety Partnership
- **DA** – Domestic abuse
- **FGM** – Female Genital Mutilation
- **KCAP** – Kent Community Alcohol Partnership
- **KCC** – Kent County Council
- **KCVS** – Kent Crime Victim Survey
- **KDAAT** – Kent Drug and Alcohol Action Team
- **KF&RS** – Kent Fire and Rescue Service
- **LAA** – Local Area Agreement
- **LCTB** – Local Children’s Trust Board
- **MARACs** – Multi Agency Risk Assessment Conference
- **MSG** - Most Similar Group- a group of local authorities with similar characteristics
- **NEET** – Not in Employment, Education or Training
- **PACT** – Police And Community Together
- **PCSOs** – Police Community Support Officer
- **PCT** – Primary Care Trust
- **PDUs** – Problematic Drug Users
- **SDC** – Sevenoaks District Council
- **SORN** – Statutory Off Road Notification
- **TFMV** – Theft From a Motor Vehicle
- **TOMV** – Theft Of a Motor Vehicle
- **YOS** – Youth Offending Service